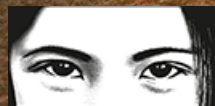




REC

Registre Electronique
de Consultation

The REC in Burkina Faso:
Deeper Insights for
Improved Healthcare System Management



Terre des hommes

Aide à l'enfance.

tdh.ch



In 2010, 1 in 6 children in Burkina Faso died before the age of five...

Mainly due to lack of access to quality healthcare services.

How to Provide Quality Healthcare Services?

The IMCI: Integrated Management of Childhood Illness:

- Protocol to assist healthcare professional in the diagnosis and treatment of children from 0 to 5
- Elaborated in the mid 1990s by notably the WHO and UNICEF
- Tested in over 50 countries (Africa and South East Asia) included Burkina Faso

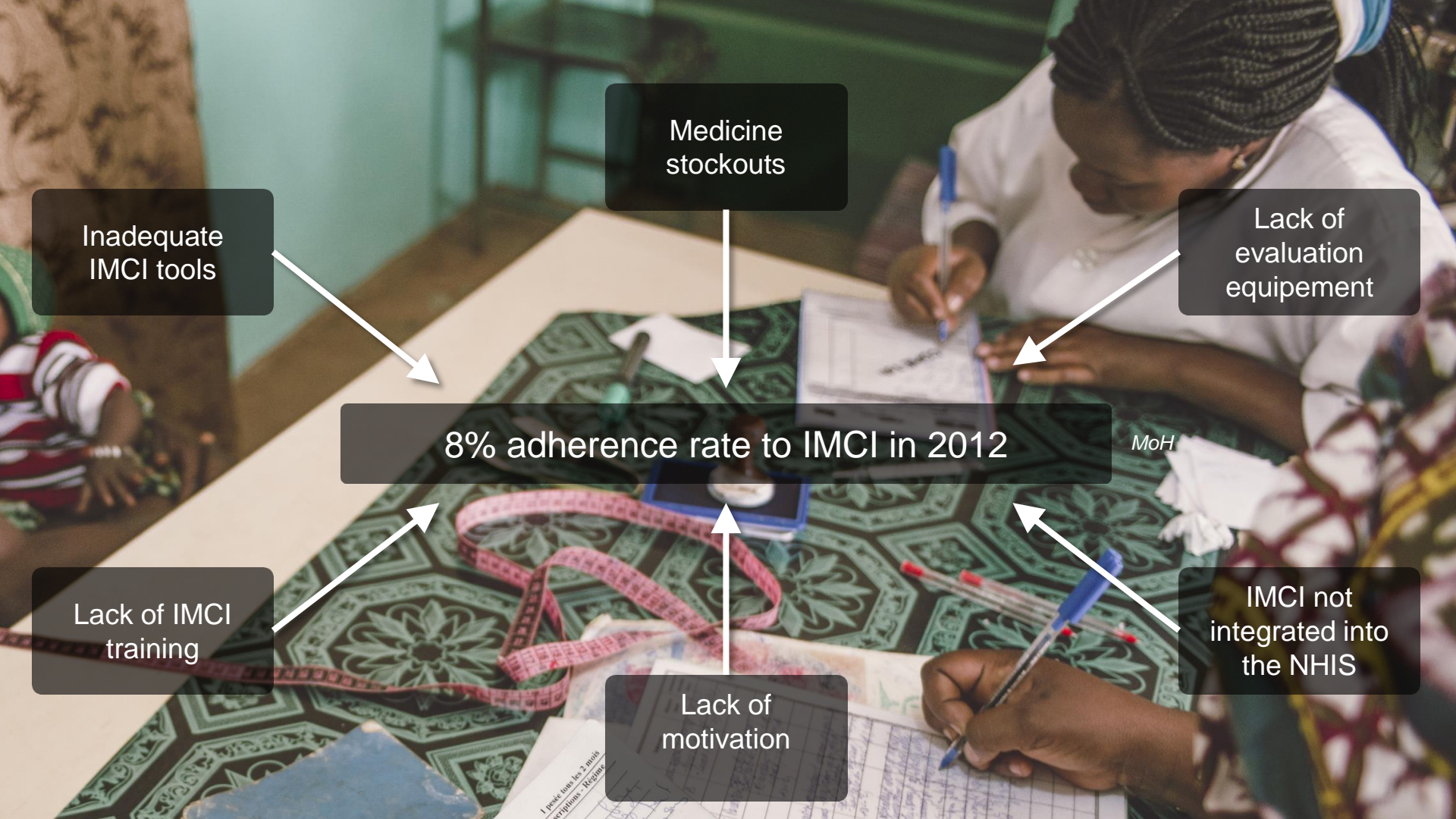
So why do we still have these issues?



REC
Registre Electronique
de Consultation

Deeper Insights for Improved Healthcare System Management

ieda-project.org



Medicine
stockouts

Lack of
evaluation
equipment

Inadequate
IMCI tools

8% adherence rate to IMCI in 2012

MoH

Lack of IMCI
training

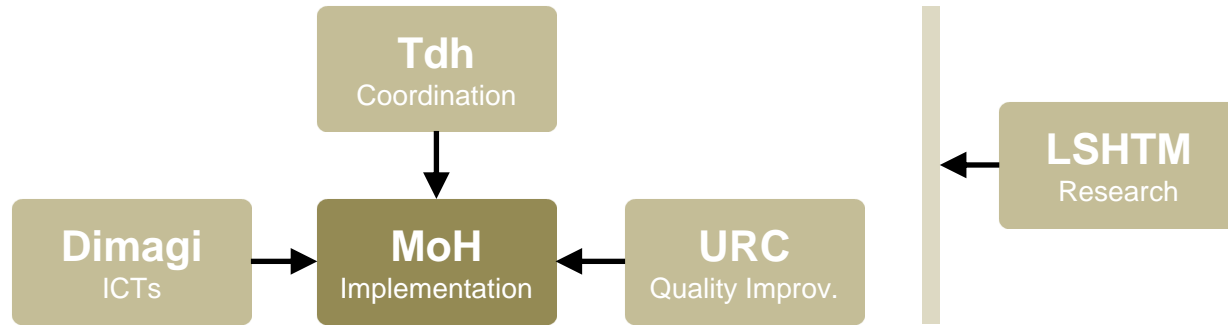
IMCI not
integrated into
the NHIS

Lack of
motivation

Integrated eDiagnostic Approach **ieDA**



Digitalize the IMCI protocol



75% adherence rate to IMCI + National scale up strategy



REC
Registre Electronique
de Consultation

Deeper Insights for Improved Healthcare System Management

ieda-project.org

leDA : Iterative Approach

2 years
400+ CSPP
11 districts
2 regions
25% du pays



leDA : a Product



REC

Registre Electronique
de Consultation



BILL & MELINDA
GATES *foundation*



REC : a mHealth Platform

Registre Electronique
de Consultation



Automated diagnostic treatment & prescription



Statistics and charts



Wireless data exchange (2G and 3G)



Automated data exports and email reports

The screenshot displays the 'Consulter l'enfant' (Consult the child) screen. At the top, there's a blue header with the title and a menu icon. Below the header, a patient profile is shown with a circular icon, the name 'Ramata Sankara', the location 'Village Gombre-SM', the gender 'Fille', and the mother's name and age 'Nom de la mère sawadogo alimata 54 Mois'. A progress bar is visible below the profile. The main content area has a blue title 'Toux' (Cough) and a question 'L'enfant a-t-il la toux ou des difficultés respiratoires ?' (Does the child have a cough or respiratory difficulties?). There are two radio button options: 'Oui' (Yes) and 'Non' (No).



REC
Registre Electronique
de Consultation

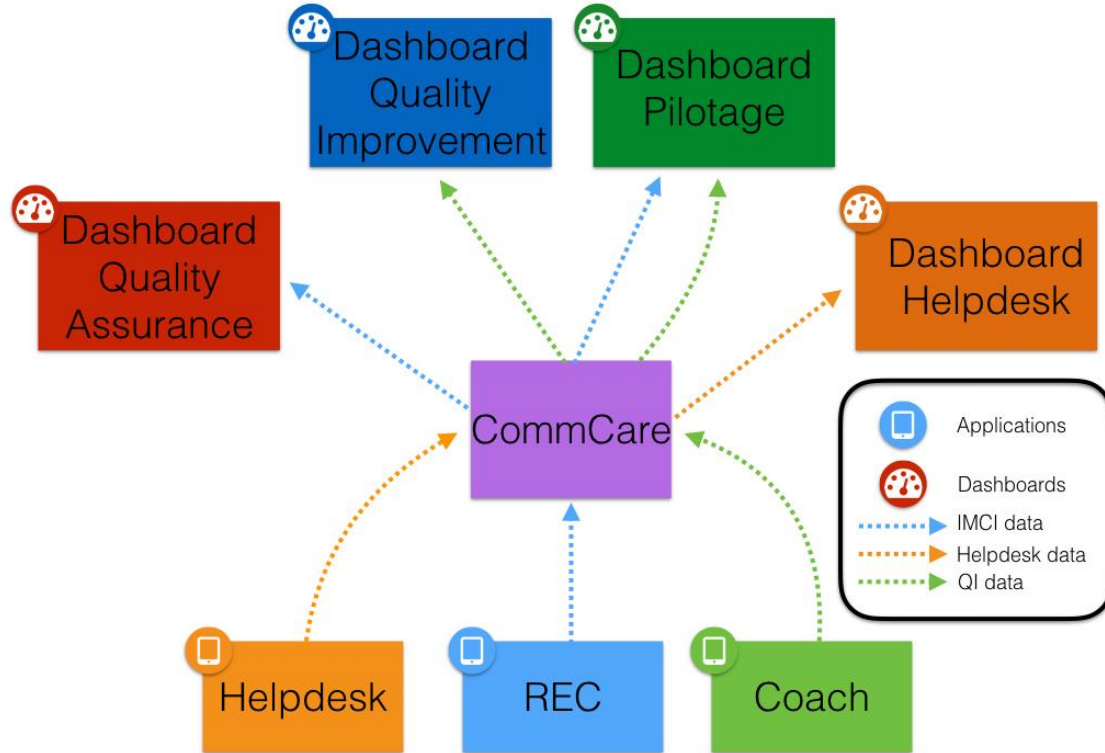
Deeper Insights for Improved Healthcare System Management

ieda-project.org



REC : a Data Platform

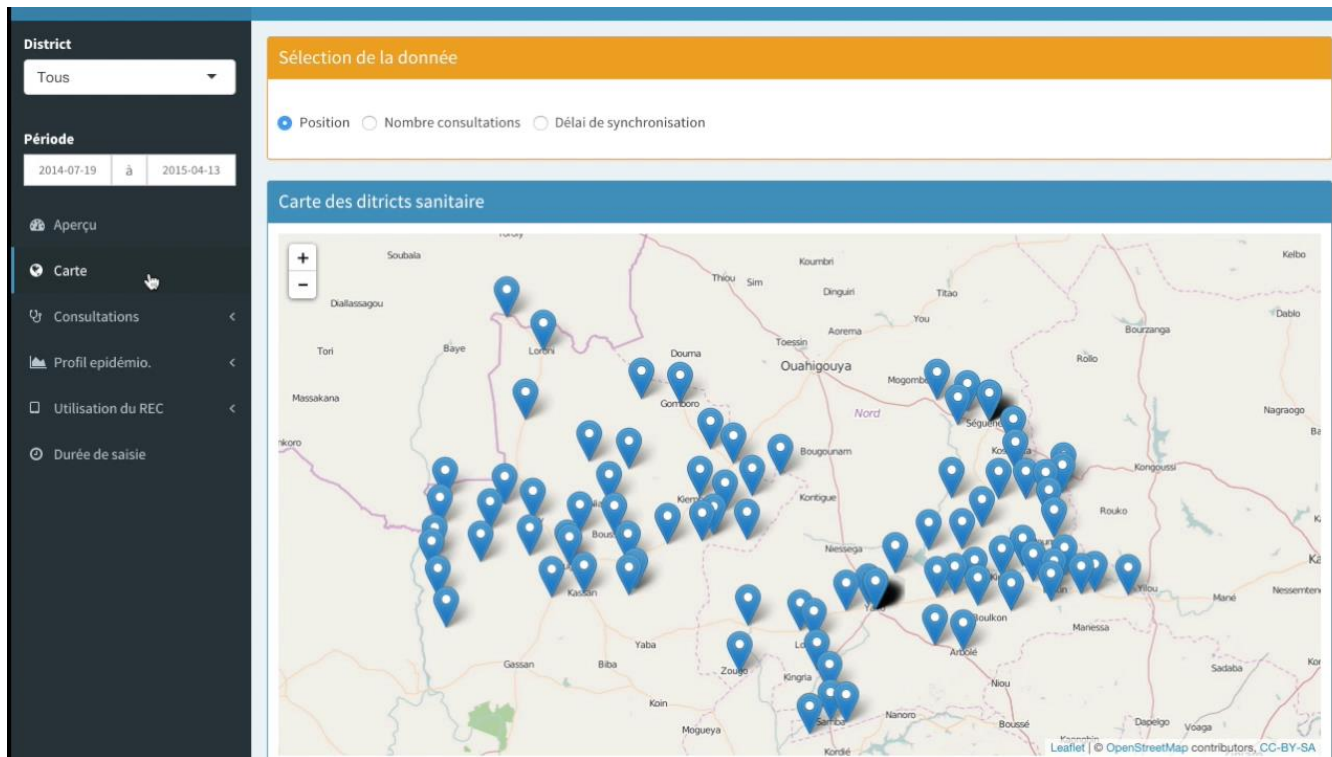
Registre Electronique
de Consultation





REC
Registre Electronique
de Consultation

REC : Improve Information Visualization



REC
Registre Electronique
de Consultation

Deeper Insights for Improved Healthcare System Management

ieda-project.org

: Speed-up Decision Making

Identify issues and implement solution:



Launch field visits to check:

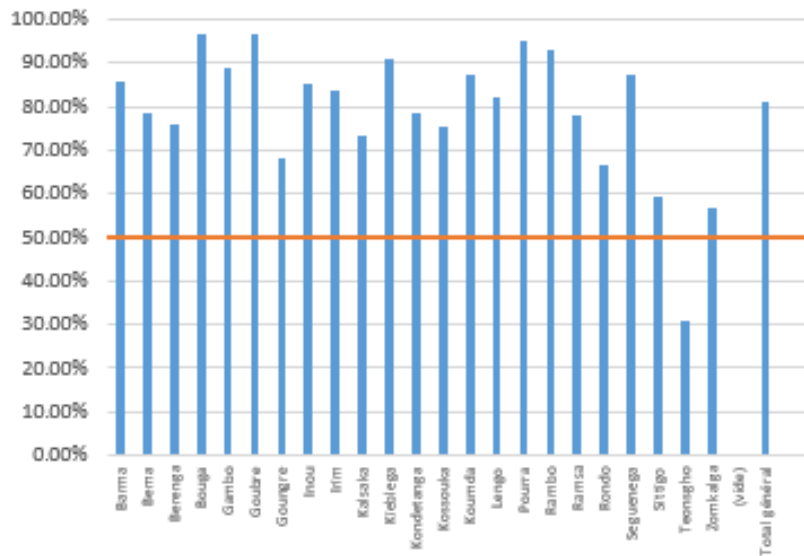
- Diagnosis process
- REC usage



Set up training about coughing issues and pneumonia:

- Improve symptoms identification

Proportion des toux / difficulté respiratoire
chez les 2 mois – 59 mois avec pneumonie



Valeur est >

50.00%



REC

Registre Electronique
de Consultation

: Data for Change

Quality-focused system



47.2% of children are correctly evaluated and treated over 200,000 consultations)

LSHTM Quantitative Study

Behavior



Nurses are **annoyed** when their REC is out of order.

LSHTM Realistic Study



Caretakers **want** health workers to use the REC

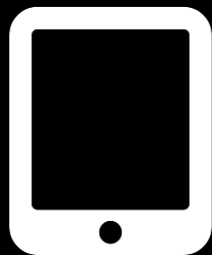
LSHTM Realistic Study



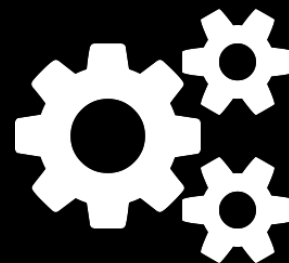
REC
Registre Electronique
de Consultation

Future Developments and Gains

Product
Development



Integrations



User-Focused Approach



Make data accessible to end-users on the tablet



Launch a medical e-learning program for continuous training



Integrate multimedia content to help users better diagnose patients



REC
Registre Electronique
de Consultation

Deeper Insights for Improved Healthcare System Management

ieda-project.org

Impact: User Level



Better trained, more efficient and committed agents



Increase REC usage



75% adherence rate to IMCI



REC
Registre Electronique
de Consultation

Deeper Insights for Improved Healthcare System Management

ieda-project.org

Integrate the REC deeper into the national healthcare ecosystem



Medical integrations:

- Prenatal care
- Treatment for all patients
- Create a digital prescription connected to the local pharmacy



Technical integration:

- Connection to the local DHIS2 server
- Transfer to the national cloud



Financial integration:

- RBF: Result Based Financing for doctors
- Universal Coverage: Check visit and patient numbers



REC
Registre Electronique
de Consultation

Deeper Insights for Improved Healthcare System Management

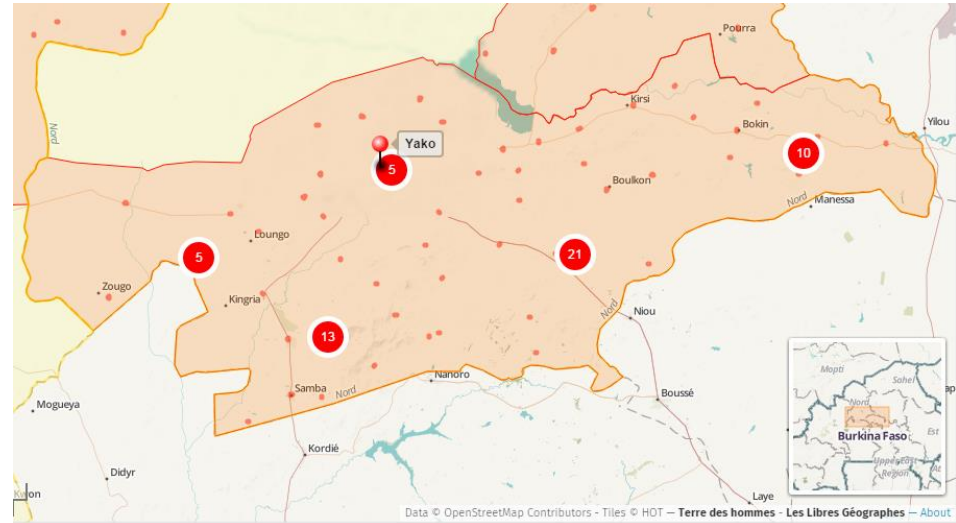
ieda-project.org

Impact: System Level

🔗 Streamlined supply chain of drugs and medicine for local pharmacies

✏️ Smarter resources allocation based on identified needs and patterns

✚ Better health crisis management



REC
Registre Electronique
de Consultation

Deeper Insights for Improved Healthcare System Management

ieda-project.org



REC

Registre Electronique
de Consultation

Leverage data to improve

Patients treatment and

and

Healthcare system management

A photograph of a rural village scene. A large, leafy tree stands in the foreground on the left. Behind it is a long, single-story building with reddish-brown walls and green shutters. Several people are visible near the building, and bicycles are parked under the tree. The sky is clear and bright.

leDA

Guillaume Foutry



gfo@tdh.ch