

The 'paradigm shift'

Complexity in health, development,
evaluation and research

Guy Kegels

ITM – 30 September 2016

What is a paradigm shift?

- 'Earth is the center of our solar system'
 - Most of us have dropped this one...

- '*Movement* is caused by *force*'
 - Somewhat more tricky, this one.
But from the 17th century onward, the result of *force* is *acceleration*...

But the shift does not always need to
be so dramatic...

- 'The purpose of a health system is to optimize people's health status'

vs.

- 'The purpose of a health system is to optimize people's health status *in the most efficient way*'

or

- The purpose.... people's health status, *especially for women and children*

What happens when we take this
complexity seriously?

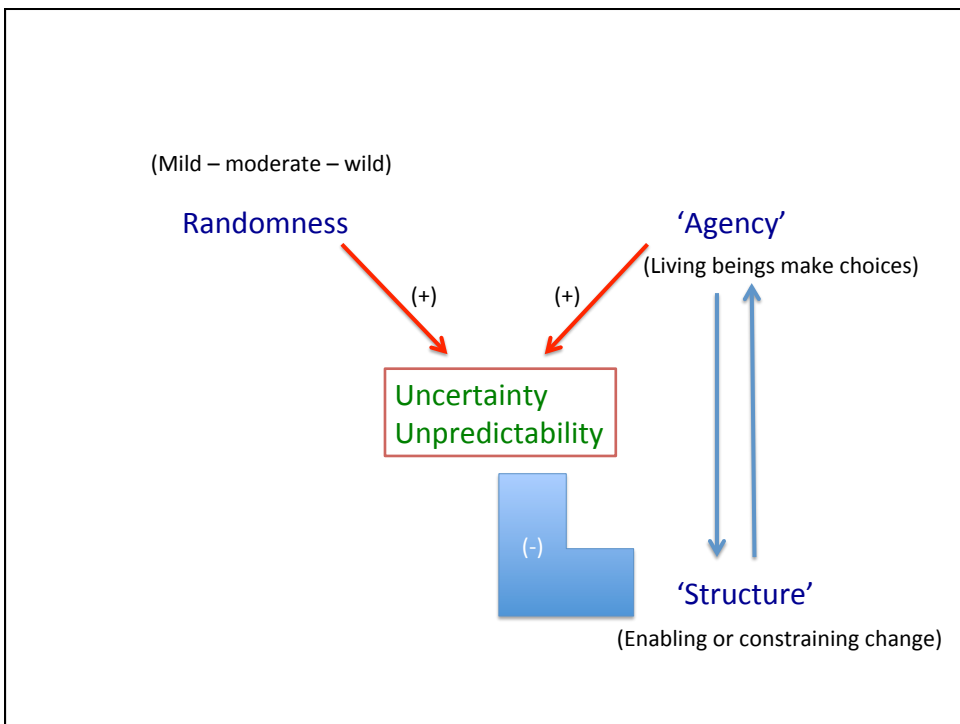
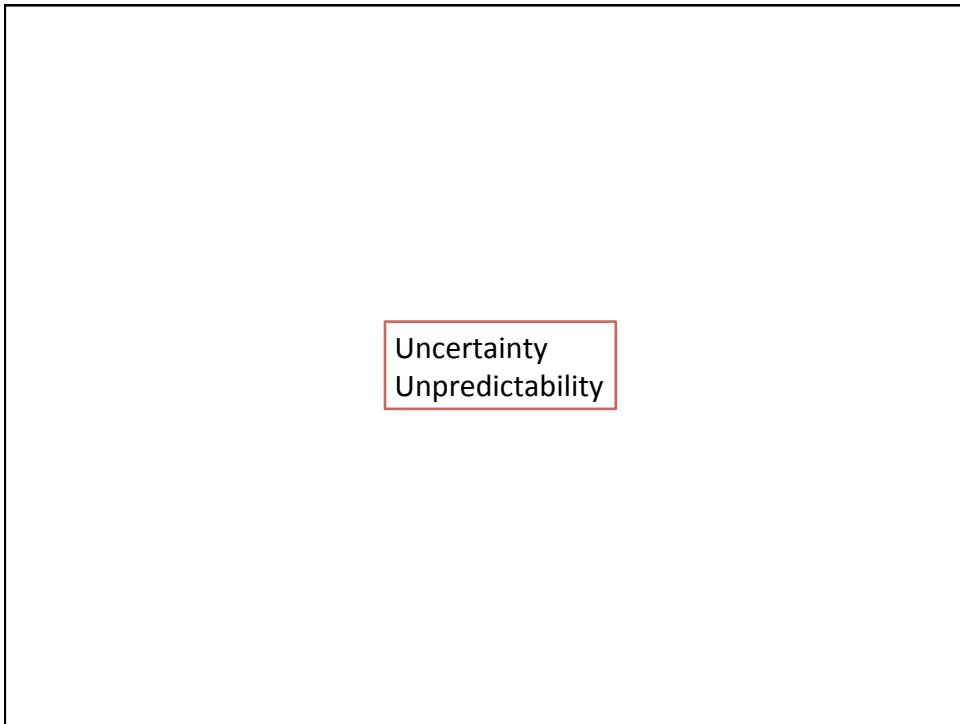
What happens when we take this complexity seriously?

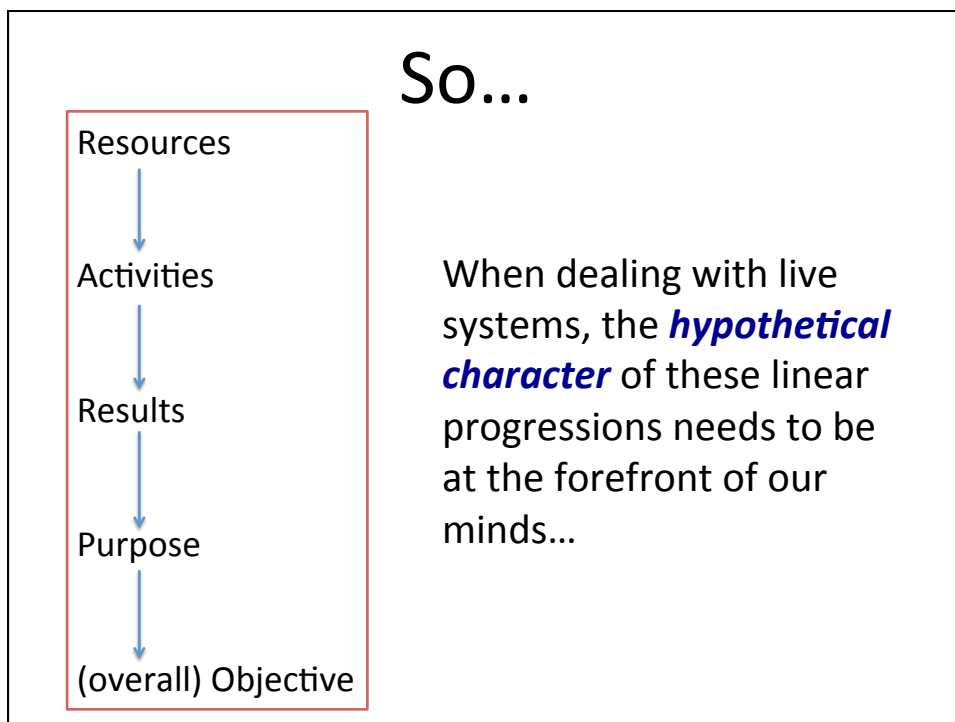
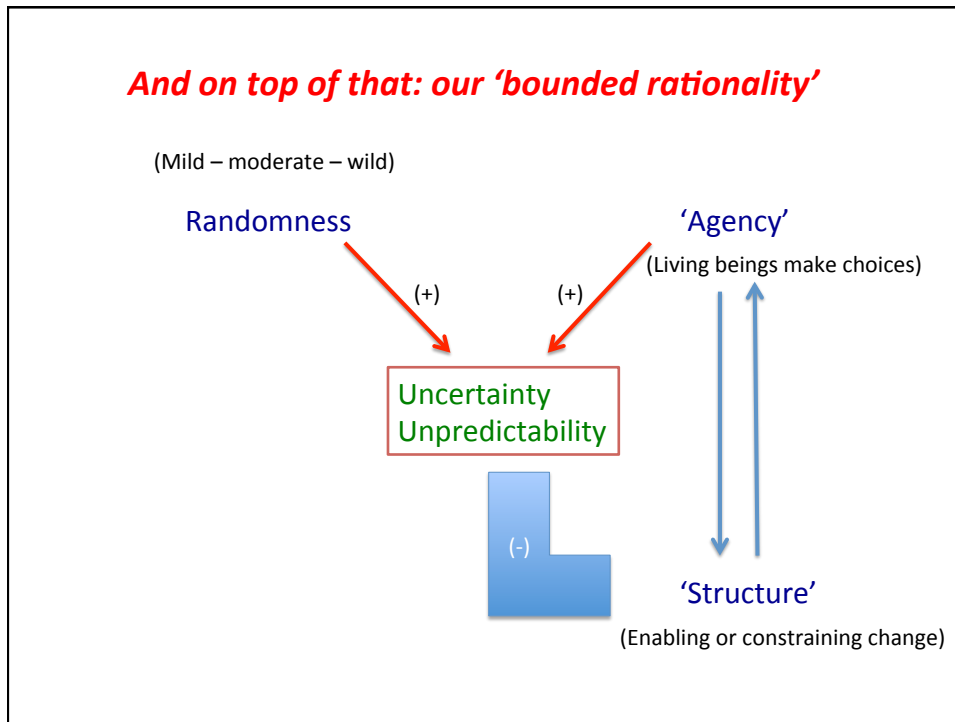
Maybe the ultimate consequence is this:

*To **incorporate uncertainty and unpredictability** in our analysis, planning, implementation and evaluation processes*

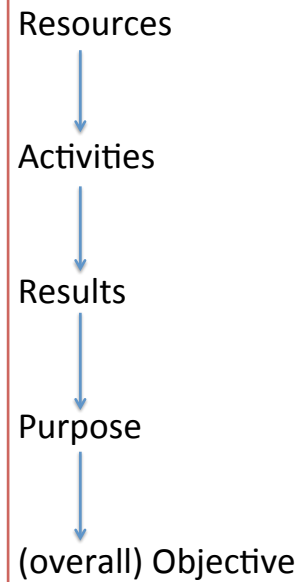
What's new?

- 'Certainty is an emotion. It has nothing to do with knowledge.'
Humberto Maturano
- 'Doubt is not a pleasant condition, but certainty is absurd.'
Voltaire
- 'Some problems are so complex that you have to be highly intelligent and well-informed just to be undecided about them.'
Laurence J. Peter





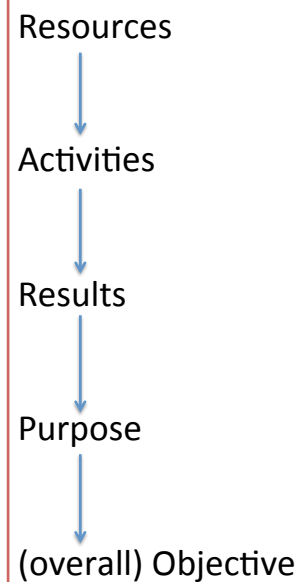
So...



When dealing with live systems, this (logical) progression only materializes

IF...

So...

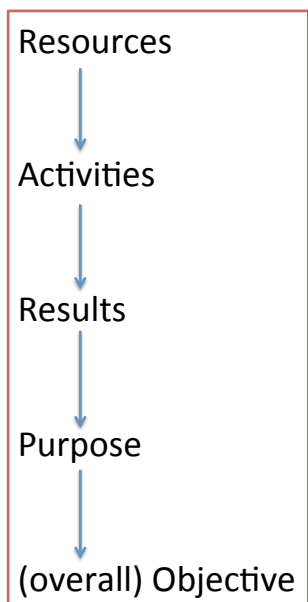


When dealing with live systems, this (logical) progression only materializes

IF...

And this (big) *IF* is the space where we can learn

So...



Therefore,
one could say that

the 'assumptions' / 'conditions'
column of the logframe
is the most important one

As well in the planning,
implementation and evaluation
stages

Acknowledging uncertainty and
(relative) unpredictability

does not have to amount to
pleading guilty to
incompetence and/or impotence.

It is the wise thing to do

as long as the goal(s)
remain clear

Is this a real 'paradigm shift' ?