

**DHIS2**



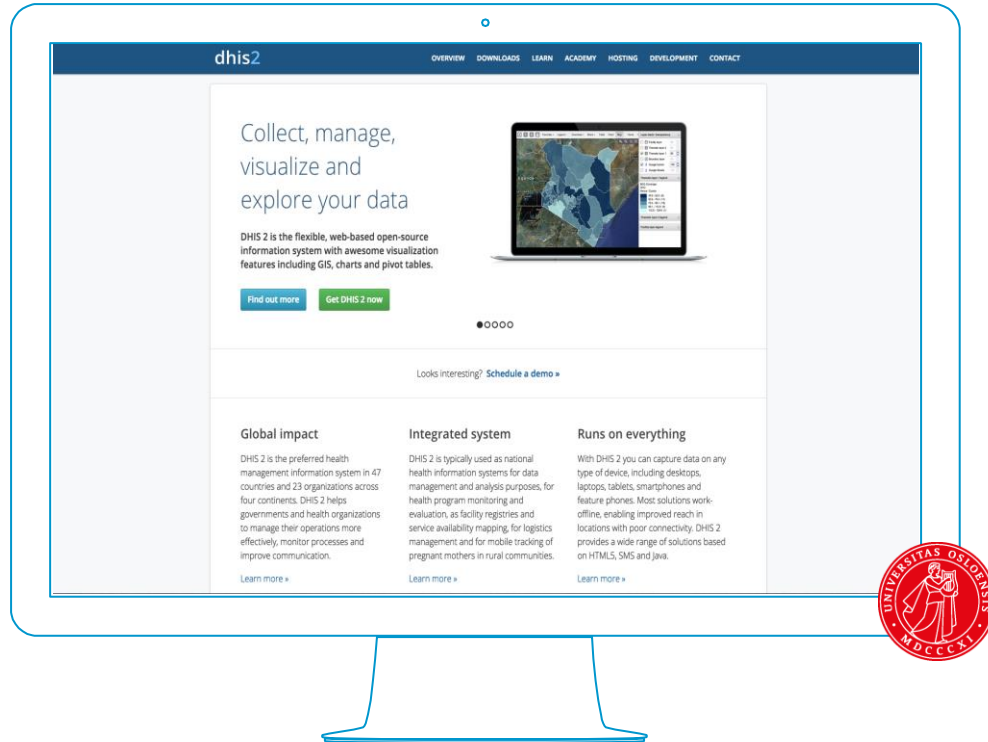
**Congratulations,  
you dared to join!**

HELLO!

# I am Antoine Legrand

*Chief Project Officer, BlueSquare*  
You can find me at @avlegrand





UiO : **University of Oslo**

- Key concepts & features
- Exercises
- Case studies
- Integrated data systems

1

# KEY CONCEPTS & FEATURES

What it's all about

- ▣ **COLLECT** multiple type of data
- ▣ **MANAGE** & aggregate your data
- ▣ **VISUALIZE** your results & track your progress

### ▣ Aggregated data

- ▣ Routine data
- ▣ Survey

### ▣ Events

- ▣ Tracker
- ▣ Individual records
- ▣ Cases
- ▣ Programs



## □ Data entry

- Browser web/laptop
- Smartphone
- Feature phone –  
Web/J2ME/SMS

## □ Validation

- Validations rules
- Std dev and min/max  
analysis

# AGGREGATED DATA

dhis2

DHIS 2 Demo - Sierra Leone

Maintenance

Services

Help

Profile

Sierra Leone

Bo

Badjala

Ngelehun CHC

Njandama MCHP

Baoma

Bargbe

Bargbo

Bumpe Ngao

Gbo

Jaiama Bongor

Kakua

Komboya

Lugbu

Niawa Lenga

Selenga

Tikonko

Valunia

Wonde

Bombali

Bonthe

Kailahun

Kambia

Kenema

Data Entry ?

Organisation Unit

Ngelehun CHC

Data Set

PHUF 2 - Children's preventive services

Period

March 2013

Prev year

Next year

Filter on section

Show all sections

×

Ngelehun CHC - March 2013

OPV1 doses given (Outreach, 12 to 59 mths)

Run validation

Print

Immunization

Filter in section

	Fixed		Outreach	
	< 12 mths	12 to 59 mths	< 12 mths	12 to 59 mths
BCG doses given	17	23	6	7
Fully Immunized child	9	23		23
LLITN given at Penta3	1		23	-1
OPV0 doses given	12	23	23	23
OPV1 doses given	5		9	23
OPV2 doses given	7	2	13	
OPV3 doses given	3		7	123
PCV1 doses given	2	45	23	45
PCV2 doses given			23	3
PCV3 doses given				



# INDIVIDUAL RECORDS

dhis2

PERSON

Find/Add Person

Sierra Leone

- Bo
  - Badjia
    - Ngelehun CHC
    - Njandama MCHP
  - Baoma
  - Bargbe
  - Bargbo
  - Bumpe Ngao
  - Gbo
  - Jaiama Bongor
  - Kakua
  - Komboya
  - Lugbu
  - Niawa Lenga
  - Selenga
  - Tikonkn

Services

Help

Profile

Person management • Person dashboard » History

Demographics • Edit profile • Change location

Full name	NG-005
Location	Ngelehun CHC
Gender	F
Date of birth	1989-11-20 (23 yr)
Mobile phone number	[None]
Health staff	[None]

Active programs • Completed programs • Enroll

MNCH / PNC (Adult Woman) (2012-11-20)

- Delivery (2013-04-10)

Relationships • Management • Register new person

Data entry screen

Reschedule and set status

Comments and messages

Program reports

What do colors mean?

Ngelehun CHC

→

ANC 1st visit  
2012-09-12

→

ANC Visit (2-4+)  
2012-11-16

→

Ngelehun CHC

→

Delivery 2013-  
04-09

→

PNC Visit 2013-  
04-11

Create new event

Date of admission \*

2013-04-09

Due date

2013-04-10

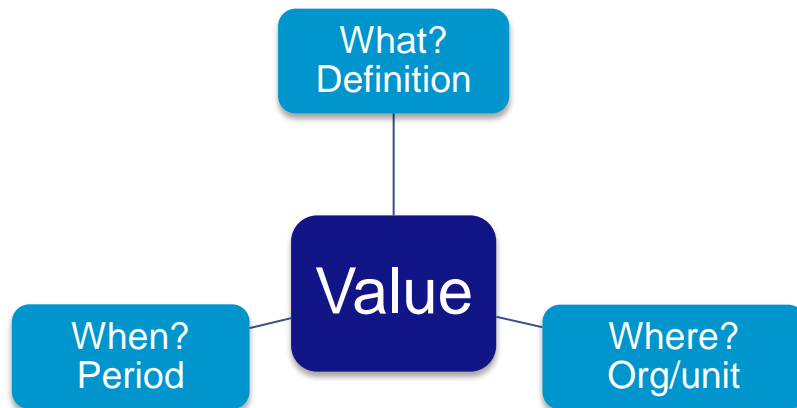
Post comment:

BLUE  
SQUARE  
ORG



# DATA ELEMENTS & DATA SETS

Number of pregnant women PVVIH under CTX  
prophylaxis, December 2015, CS of XXX



- Data analysis

- Pivot tables

- Charts

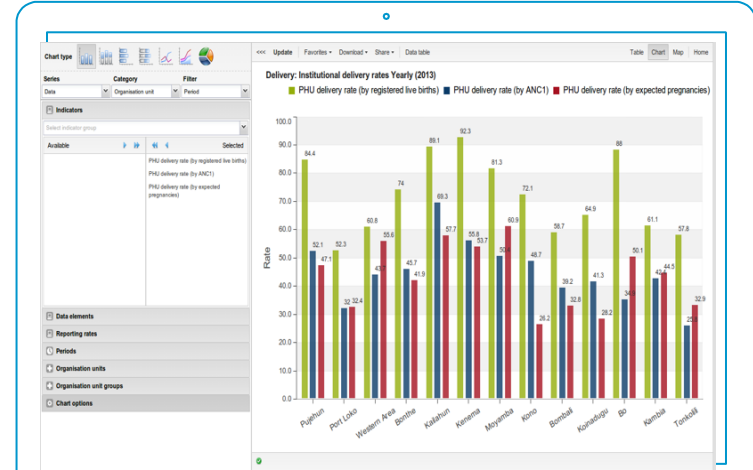
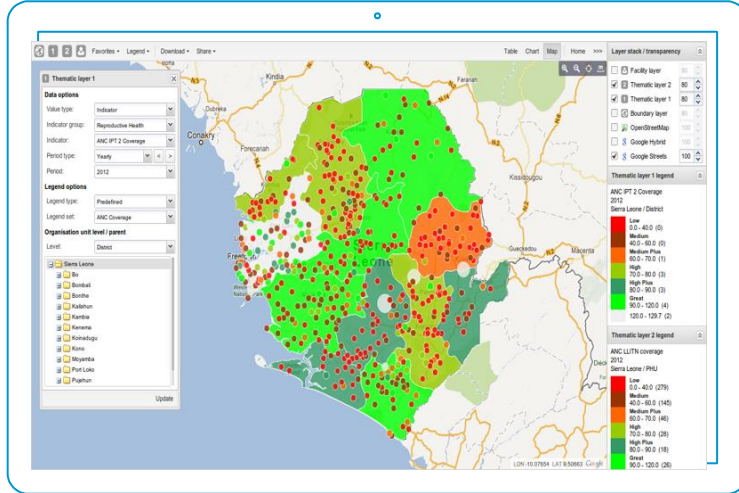
- GIS

- Dashboard

- Interpretations

- Apps and web API

# VISUALIZE DATA





2

## EXERCISES

Now it's your turn

Go to: [www.cordaidsis.org](http://www.cordaidsis.org)

Username: Guest

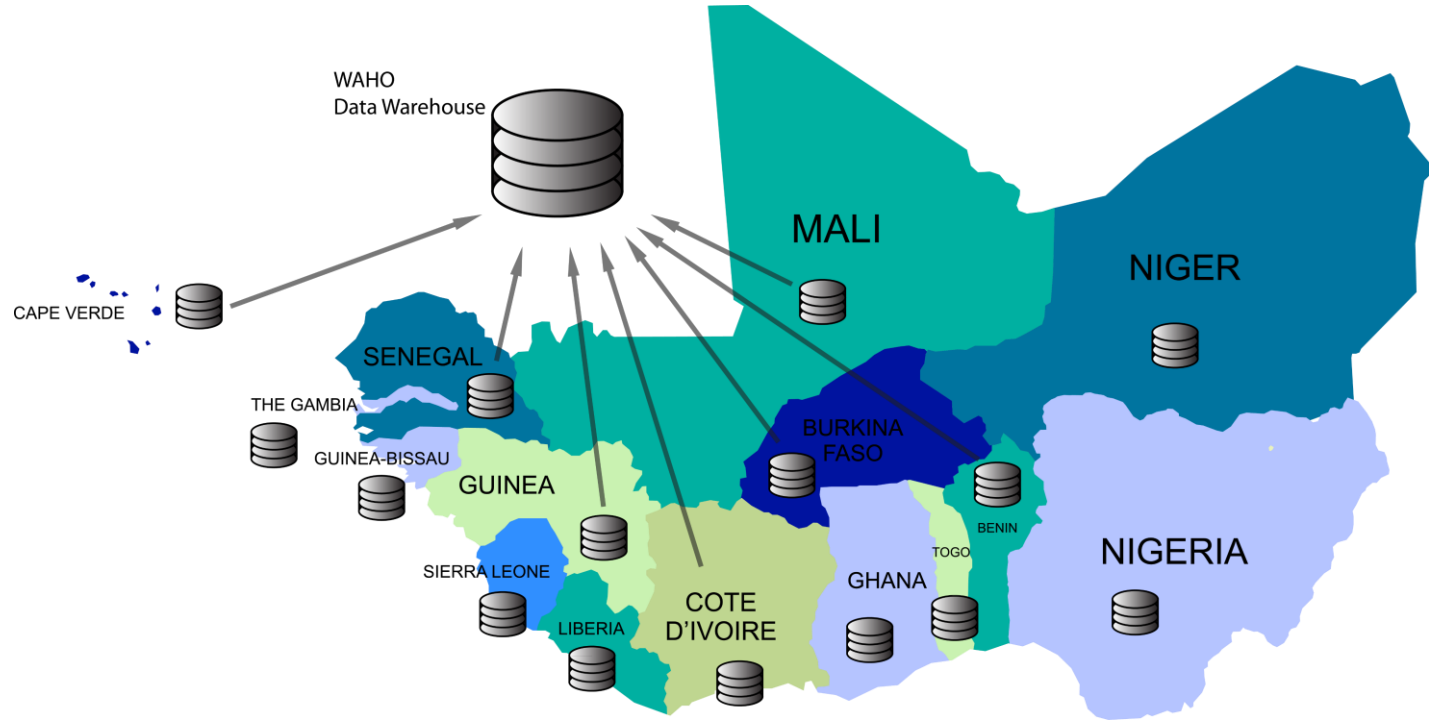
Password: District2016

- From data set “STS”, create a table showing different ART lines, by months (Jan-Sept 2016), country-level
- Save your table: *Yourname\_ARTlines*
- Open this table as a chart, then breakdown DPS and Q2 T2016

## CASE STUDIES

What we've learned from previous experiences

## REGIONAL DATA WAREHOUSE

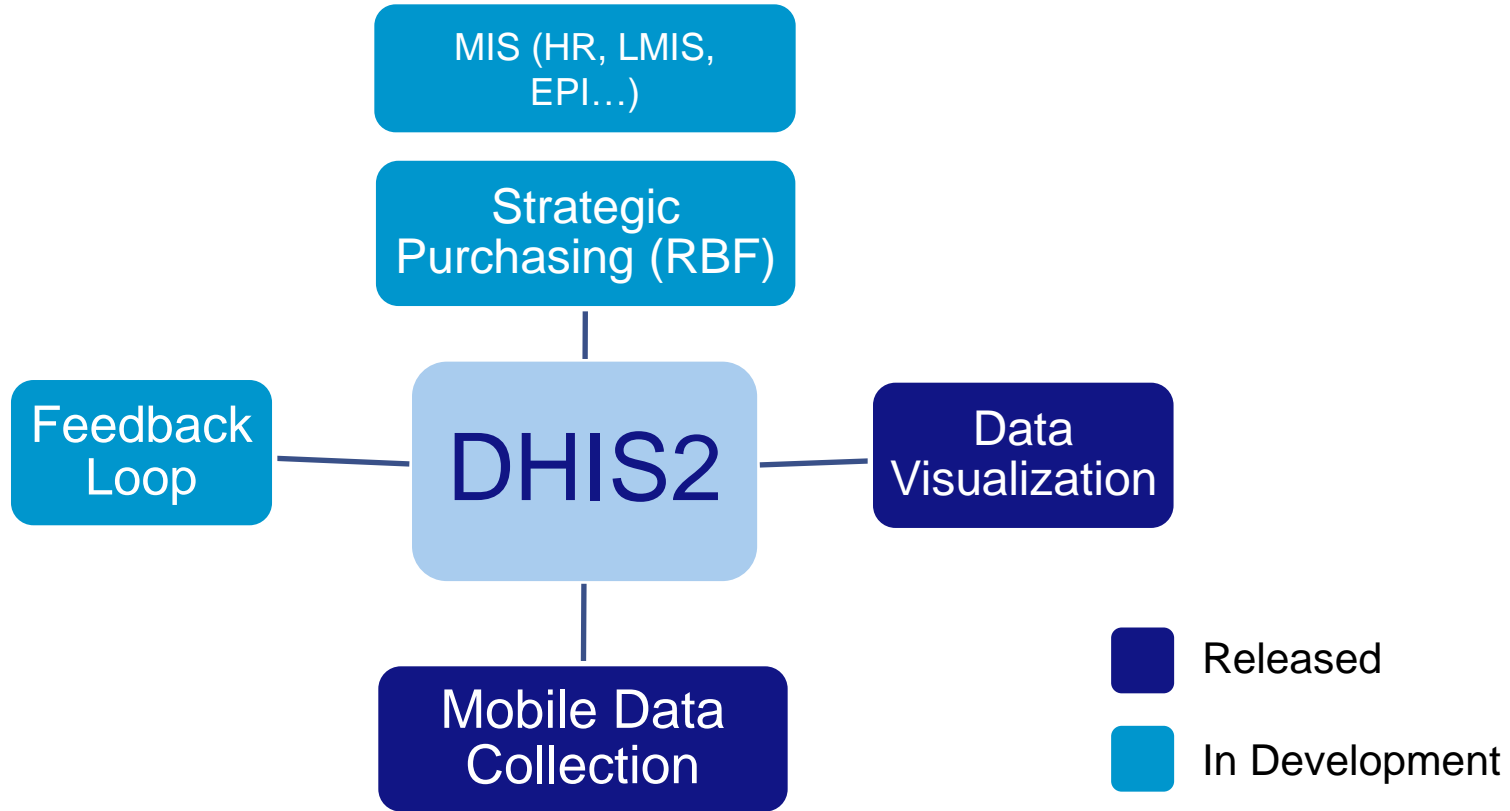


# INTEGRATED DATA SYSTEMS

Using the power of DHIS2

- ❑ Fragmented, uncoordinated data systems
- ❑ Duplicated investments
- ❑ Lack of transparency and accountability

## A SIMPLE ARCHITECTURE



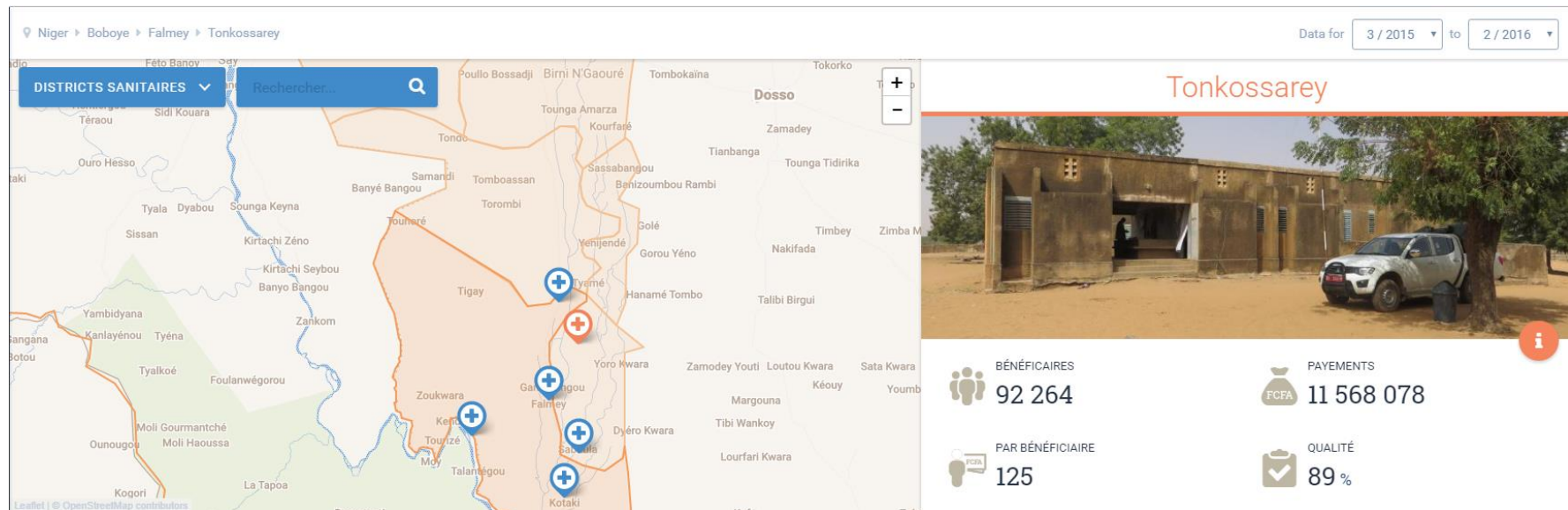




# INTEROPERABILITY

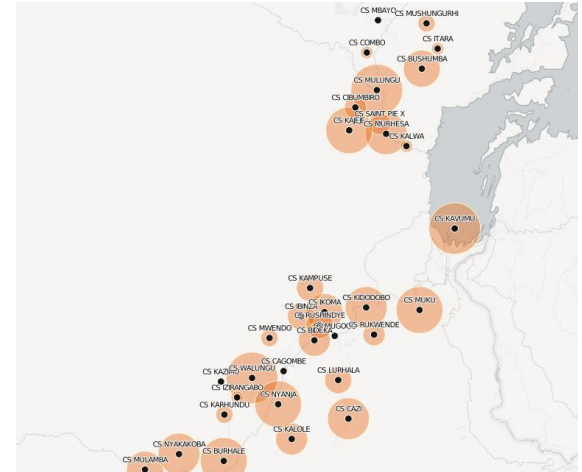
Making relevant information available

## MASTER FACILITY LIST

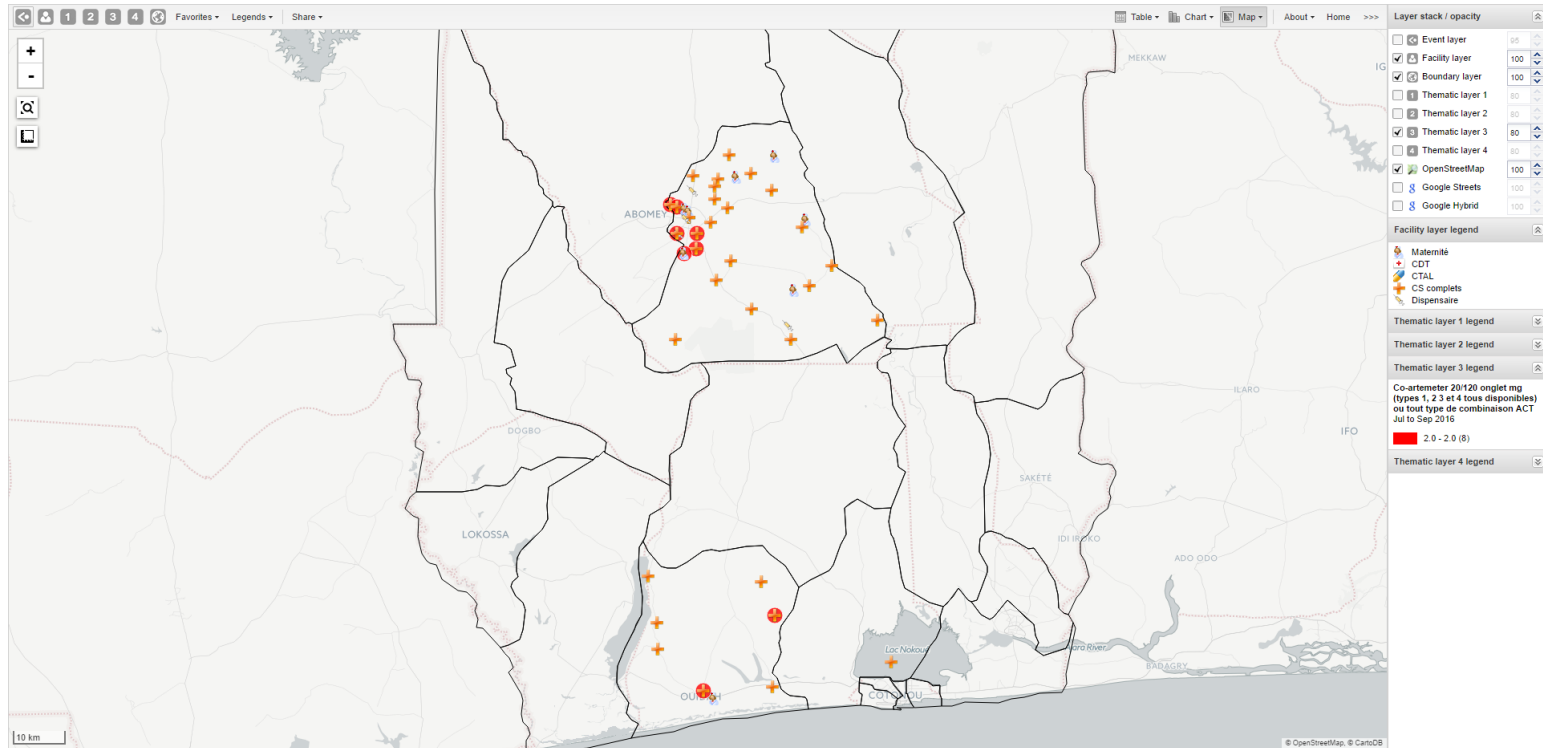


[kmhfl.health.go.k](http://kmhfl.health.go.k)

\_\_\_\_\_



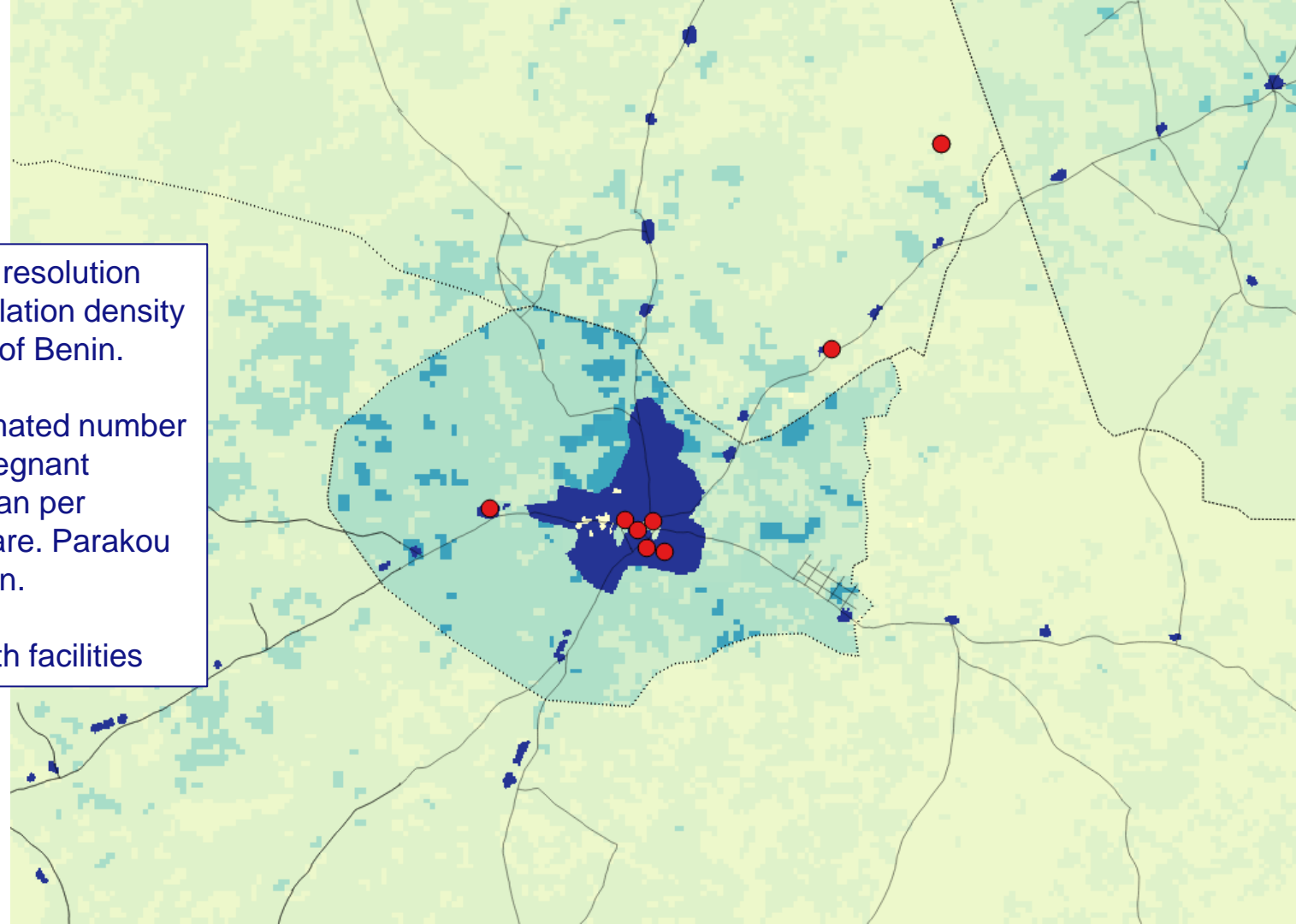
# TRACKING SERVICE AVAILABILITY & READINESS



High resolution  
population density  
map of Benin.

Estimated number  
of pregnant  
woman per  
hectare. Parakou  
region.

Health facilities





# TRANSPARENCY

Showcasing the results of your intervention

Sierra Leone

Data for 1 / 2015 to 4 / 2016

## Sierra Leone

DISTRICTS SANITAIRES

Rechercher...

ENTITÉS  
1 166

ANC 1ST VISIT  
52 871

ANC 2ND VISIT  
49 745

ANC 3RD VISIT  
37 062

ANC 4TH OR MORE VISITS  
24 320

IPT 1ST DOSE GIVEN AT PHU  
54 524



### Child Health

BCG DOSES GIVEN

17 600

CHILDREN GETTING THERAPEUTIC FEEDING

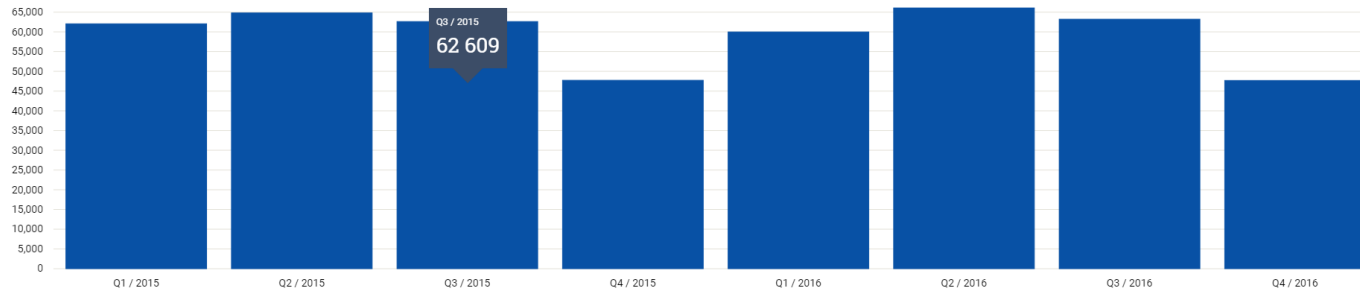
10 000

CHILDREN SUPPLIED WITH FOOD SUPPLEMENTS

20 000

AUTRES  
INDICATEURS

BCG doses given



EXPORTER LES DONNÉES

PARTAGER CETTE PAGE







Bénin

Data for 1 / 2015 to 2 / 2016

## Bénin

### DISTRICTS SANITAIRES



ENTITÉS  
**3 744**

GESTION DU BUDGET, DES COMPTES ET DES BIENS

**97,8**

VACCINATION AU BCG

**23 523**

### INDICATEURS

NOMBRE DE CAS TBC TRAITÉS ET GUÉRIS

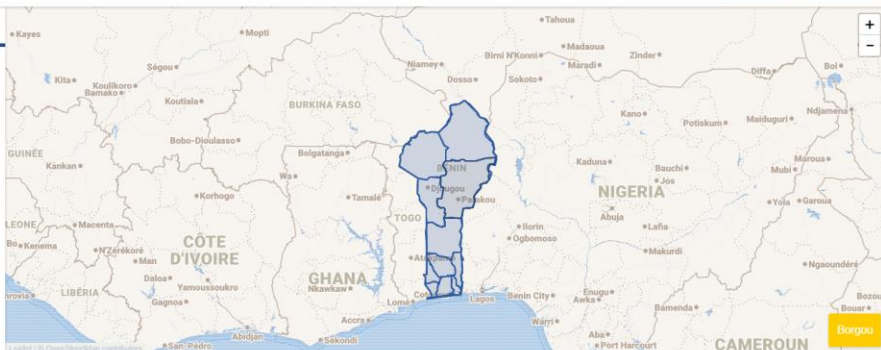
**151**

NOMBRE DE NOUVELLES ACCEPTANCES POUR LES MÉTHODES CONTRACEPTIVES DE LONGUE DURÉE (DIU ET IMPLANT)

**8 226**

ACCOUCHEMENT: REFERENCE D'URGENCE POUR ACCOUCHEMENT

**1 020**



Quantity

ACCOUCHEMENT EUTOIOQUE ASSISTE

**14 662**

ACCOUCHEMENT EUTOIOQUE ASSISTE FEMME INDIGENTE (PRIME ADDITIONNELLE)

**22**

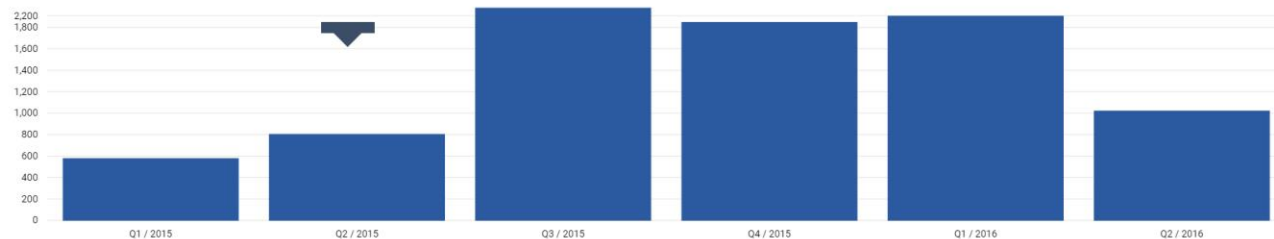
ACCOUCHEMENT: REFERENCE D'URGENCE POUR ACCOUCHEMENT

**1 020**

AUTRES INDICATEURS

Accouchement: reference d'urgence pour accouchement

Bar chart icon Line chart icon Table icon



## Edit Project 'République du Congo'

[Dashboard](#) / [Projects](#) / [République du Congo](#) / [Edit](#)[Delete](#) [Show](#) [Edit](#)

## ▼ General Informations

Name République du Congo

Required.

Description

Le FBR est un outil puissant d'amélioration de la qualité et la quantité des services de santé en offrant aux prestataires des mesures incitatives et des

Optional.

Short description

Financement Basé sur les Resultats en République du Congo

Required.

Ministry

MINISTERE DE LA SANTE PUBLIQUE

Optional.

Currency

Optional.

Front Office URL

ftp-msp.org

Required.

No ssl verification ☐

## ▼ DHIS2 Settings

Dhis2 url

http://dhis2-cg-hit-prod.herokuapp.com

Required.

Dhis2 user

front-end

Required.

Dhis2 password

p1gEWUJ4chncUmQbohZVUYKA

Required.

Entities level

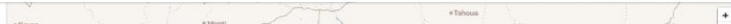
5

Required.

## ▼ Logos

Data for 1/2015 to 2/2016

## Bénin

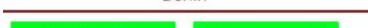


Le Ministère de la Santé du Bénin finance les structures de santé sur base de leurs performances. Celle-ci est vérifiée par des organismes extérieurs indépendants.

Bénin

Data for 1/2015 to 2/2016

## Bénin



Le Ministère de la Santé du Bénin finance les structures de santé sur base de leurs performances. Celle-ci est vérifiée par des organismes extérieurs indépendants.

Bénin



Le Ministère de la Santé du Bénin finance les structures de santé sur base de leurs performances. Celle-ci est vérifiée par des organismes extérieurs indépendants.

Bénin

## Bénin



Le Ministère de la Santé du Bénin finance les structures de santé sur base de leurs performances. Celle-ci est vérifiée par des organismes extérieurs indépendants.

Bénin



Quantity

ACCROICHES AUTOCURASSABLES

14 662

ACCROICHES AUTOCURASSABLES

ACCROICHES AUTOCURASSABLES

22

ACCROICHES AUTOCURASSABLES

ACCROICHES AUTOCURASSABLES

1 020

ACCROICHES AUTOCURASSABLES

ACCROICHES AUTOCURASSABLES

14 662

ACCROICHES AUTOCURASSABLES

ACCROICHES AUTOCURASSABLES

22

ACCROICHES AUTOCURASSABLES

ACCROICHES AUTOCURASSABLES

1 020

ACCROICHES AUTOCURASSABLES

ACCROICHES AUTOCURASSABLES

14 662

ACCROICHES AUTOCURASSABLES

ACCROICHES AUTOCURASSABLES

22

ACCROICHES AUTOCURASSABLES

ACCROICHES AUTOCURASSABLES

1 020

ACCROICHES AUTOCURASSABLES

ACCROICHES AUTOCURASSABLES

14 662

ACCROICHES AUTOCURASSABLES

ACCROICHES AUTOCURASSABLES

22

ACCROICHES AUTOCURASSABLES

ACCROICHES AUTOCURASSABLES

1 020

ACCROICHES AUTOCURASSABLES

ACCROICHES AUTOCURASSABLES

14 662

ACCROICHES AUTOCURASSABLES

ACCROICHES AUTOCURASSABLES

22

ACCROICHES AUTOCURASSABLES

ACCROICHES AUTOCURASSABLES

1 020

ACCROICHES AUTOCURASSABLES

ACCROICHES AUTOCURASSABLES

14 662

ACCROICHES AUTOCURASSABLES

ACCROICHES AUTOCURASSABLES

22

ACCROICHES AUTOCURASSABLES

ACCROICHES AUTOCURASSABLES

1 020

ACCROICHES AUTOCURASSABLES

THANKS!

# Any questions?

You can find me at  
@avlegrand  
alegrand@bluesquare.org