



# She Decides.

---

## Has she access?

Measuring Family Planning access through the combination of multiple data sources and geospatial intelligence



Our technologies promote  
smarter allocation of global health  
resources in emerging economies

---

so they get to where  
it matters most.

# 21

## COUNTRIES

Haiti

Senegal

Mali

Niger

Chad

Burkina Faso

Benin

Sierra Leone

Côte d'Ivoire

Nigeria

Central African Republic

Cameroon

Congo

Democratic Republic of the Congo

Rwanda

Sudan

Ethiopia

Kenya

Zanzibar

Malawi

Zimbabwe

Lesotho

Kyrgyzstan

Democratic People's Republic of Korea



# An estimated 225 million women

---

in developing countries have an unmet  
need for a modern contraceptive method

54 million

unintended pregnancies,

26 million

abortions

and 7 million

miscarriages;

as well as 79 000

maternal deaths

and 1.1 million

infant deaths



Western Africa

28%

of the women have unmet  
Family Planning needs

(Track20.org 2014)



Senegal

26%

of the women have unmet  
Family Planning needs



Bénin

36%

of the women have unmet  
Family Planning needs

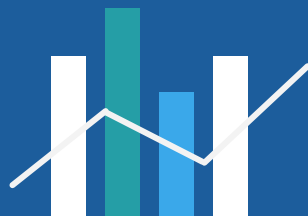
The problem

Has she access ?



# Dashboard

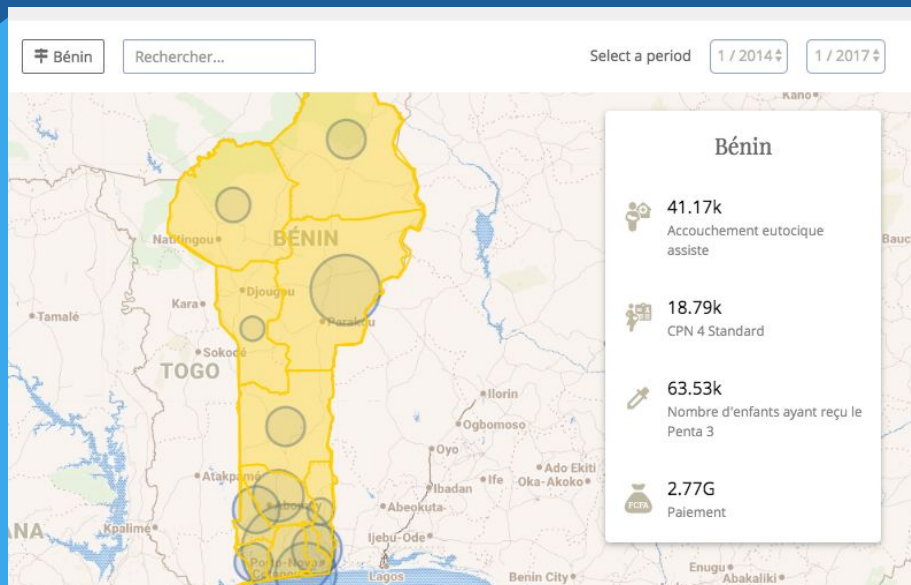
Combine public and private sector health system data, survey data, big data sources and geospatial intelligence in a country-level family planning web dashboard



# How | Starting point

**dhis2**

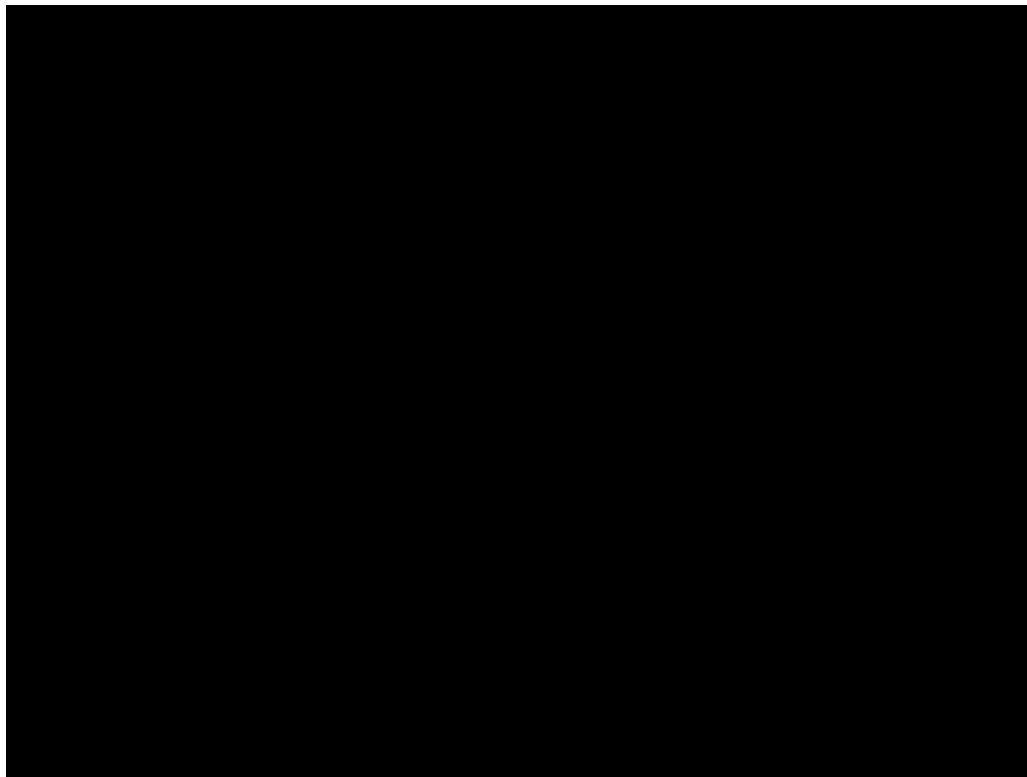
Data  
Warehouse



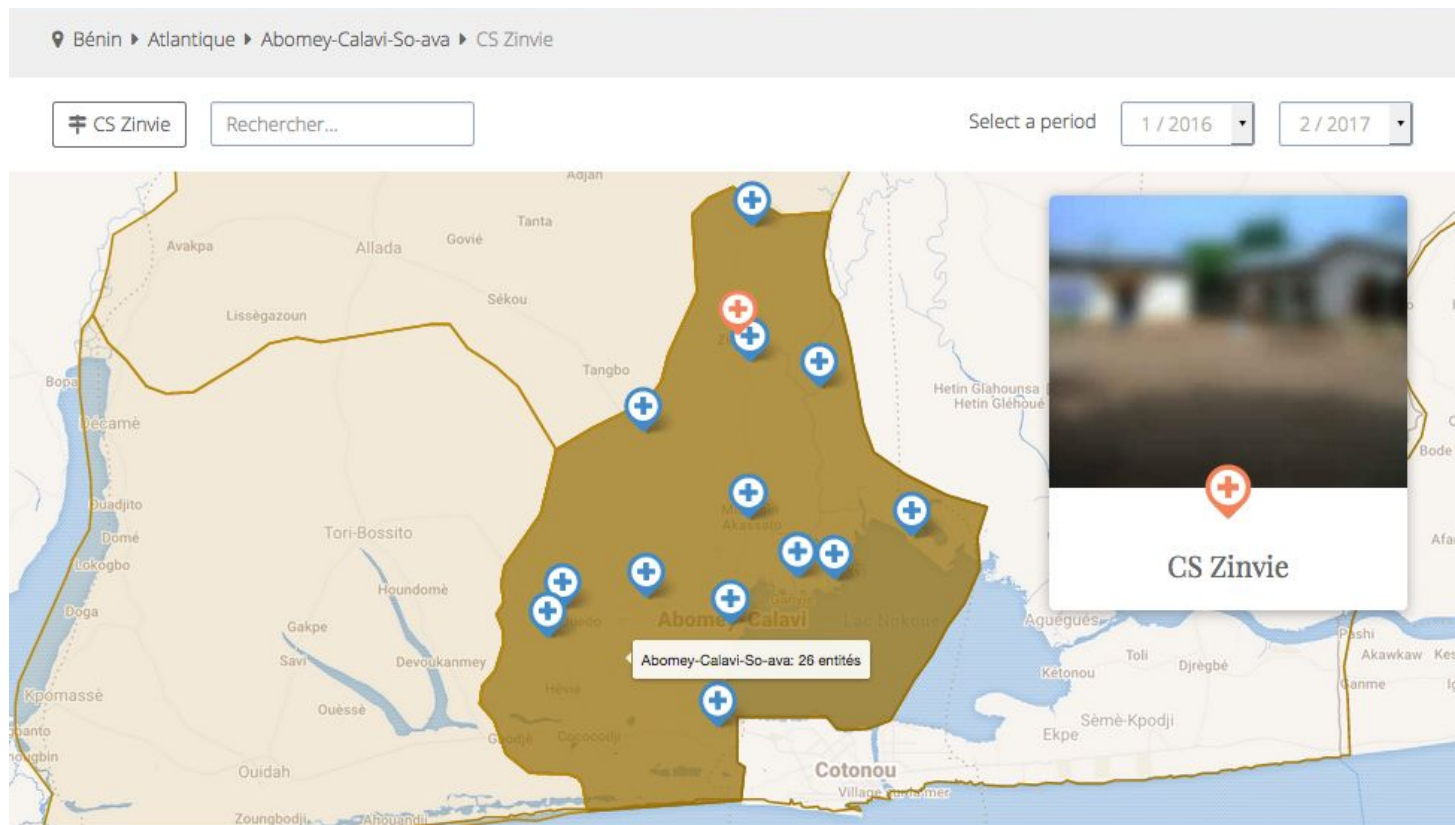


# DHIS2 & Data Viz

Open health system data in Benin with Data Viz



# A Family Planning dashboard



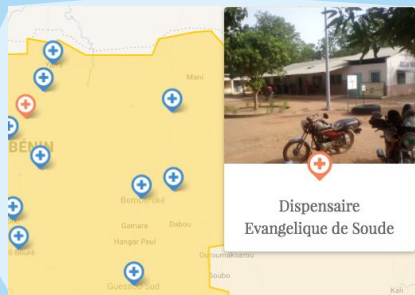
# How | Enrich with multiple health facility data sources



Private sector service  
provision data



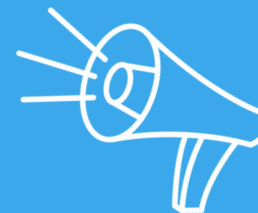
Health Facility  
Assessments



FP dashboard

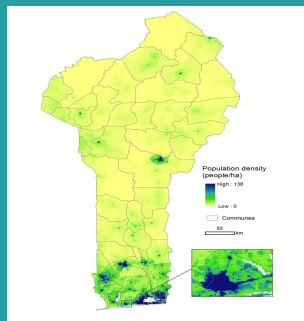


Quality of care

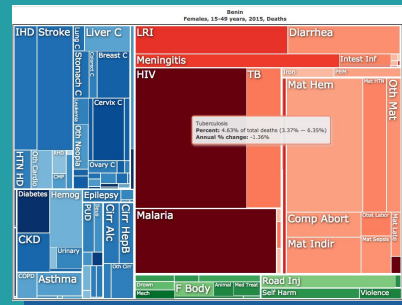


Patient Feedback

# How Enrich with demographic data and big data sources



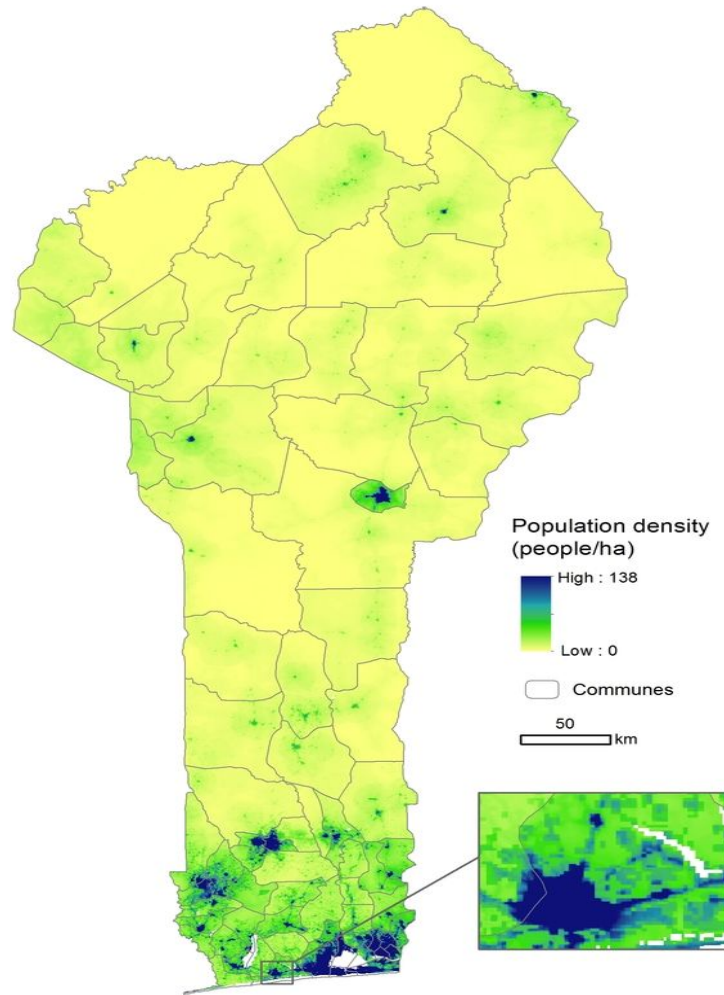
Demographic  
and Health Survey



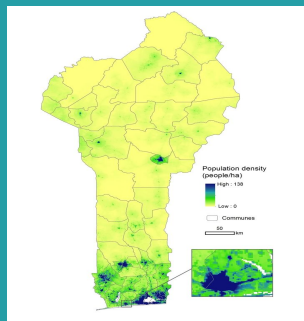
Burden of disease



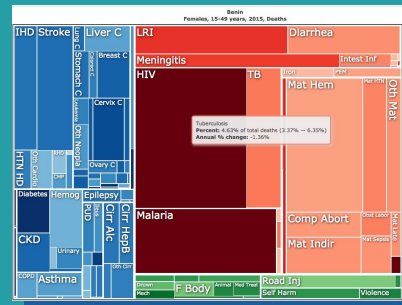
Open Street Map



# How Enrich with demographic data and big data sources



Demographic  
and Health Survey



Burden of disease



Open Street Map

# From

📍 Bénin ▶ Borgou ▶ Bembèrèkè-Sinendé

📍 Bembèrèkè-Sinendé

Rechercher...

Select a period

1 / 2016

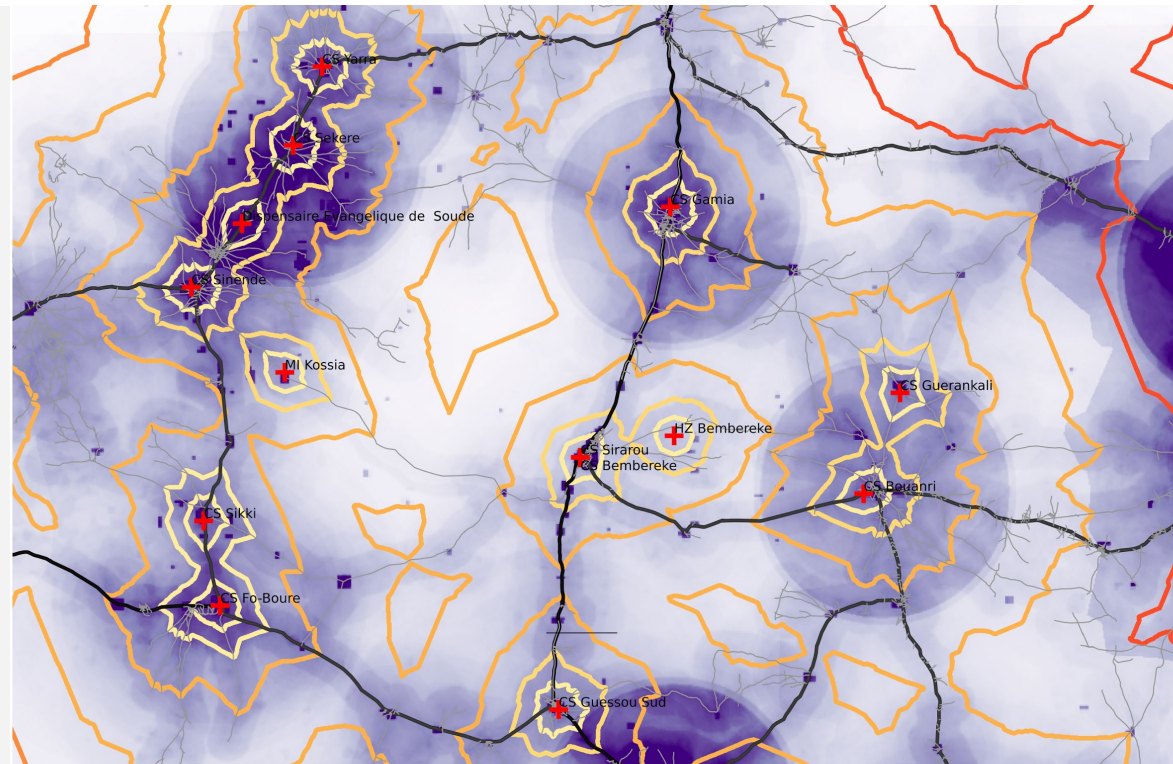
2 / 2017





# To

Time distance of women of child bearing age (WOCBA) to health centers

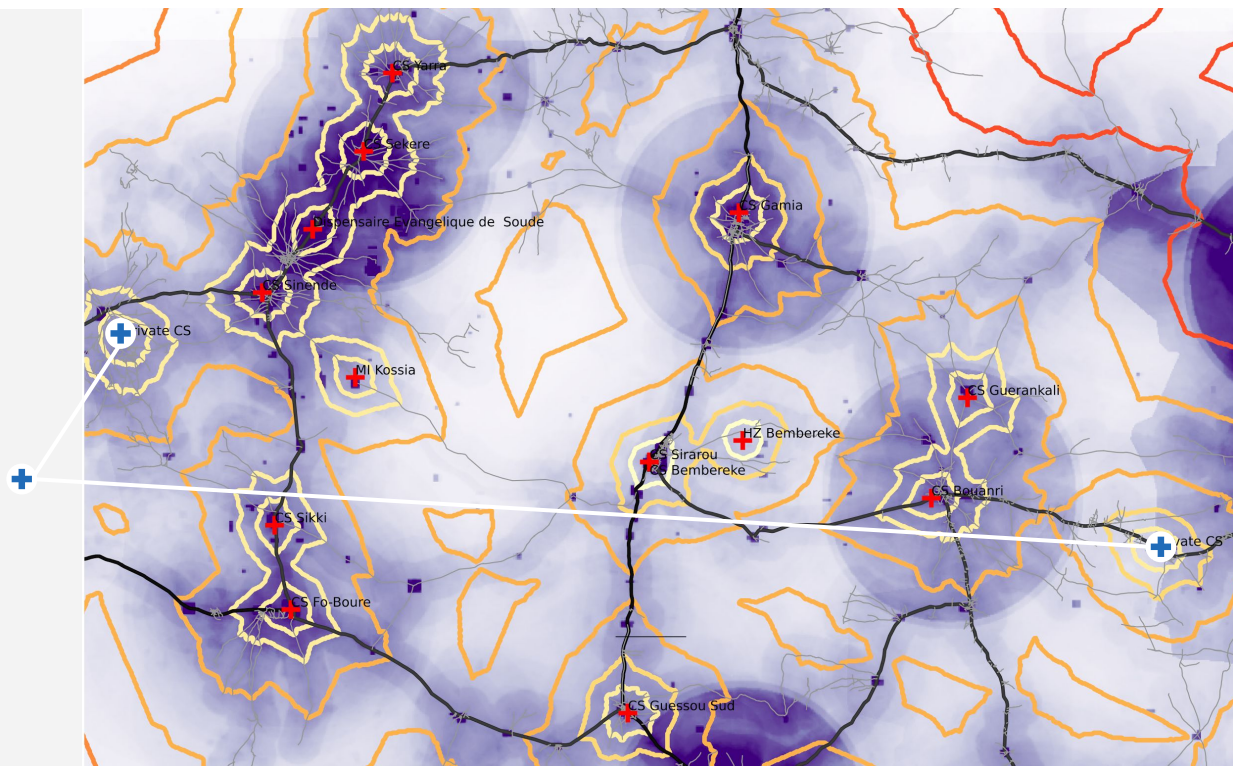




# Inclusion of the private sector data

Time distance of women of child bearing age (WOCBA) to health centers

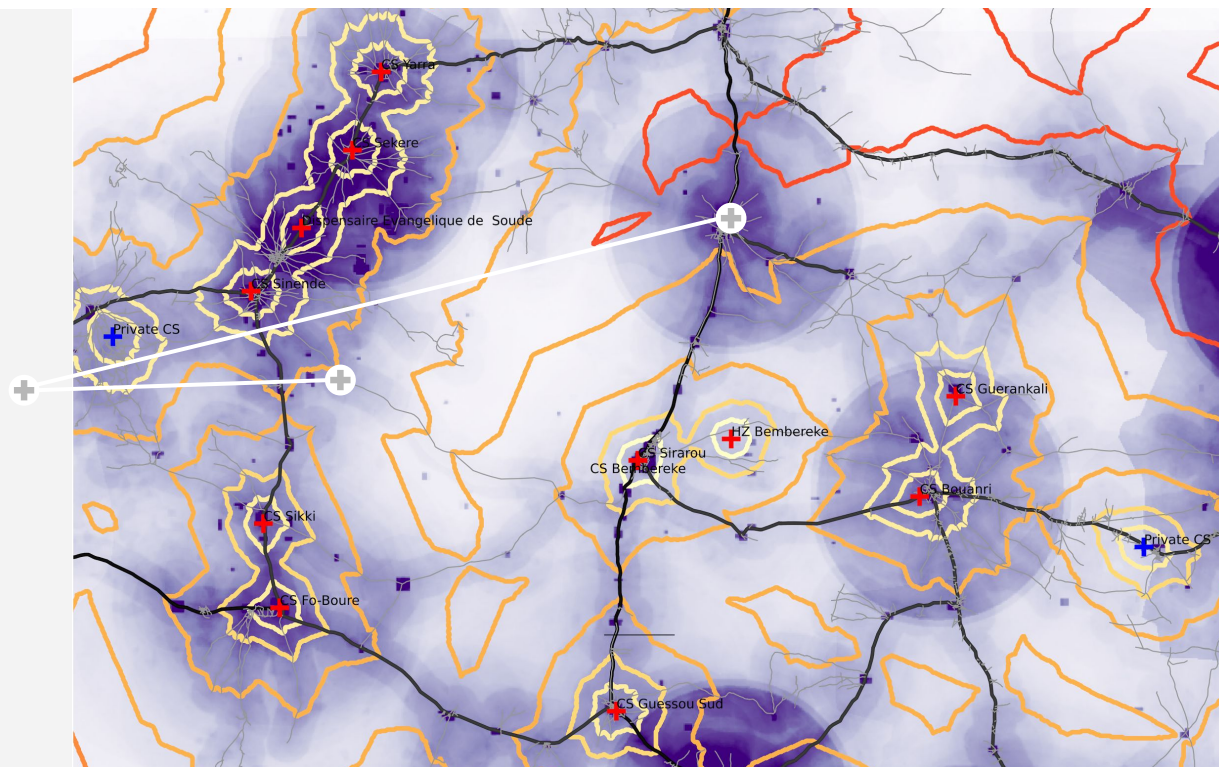
private  
sector



# Taking account service availability disruption

Time distance of women of child bearing age (WOCBA) to health centers

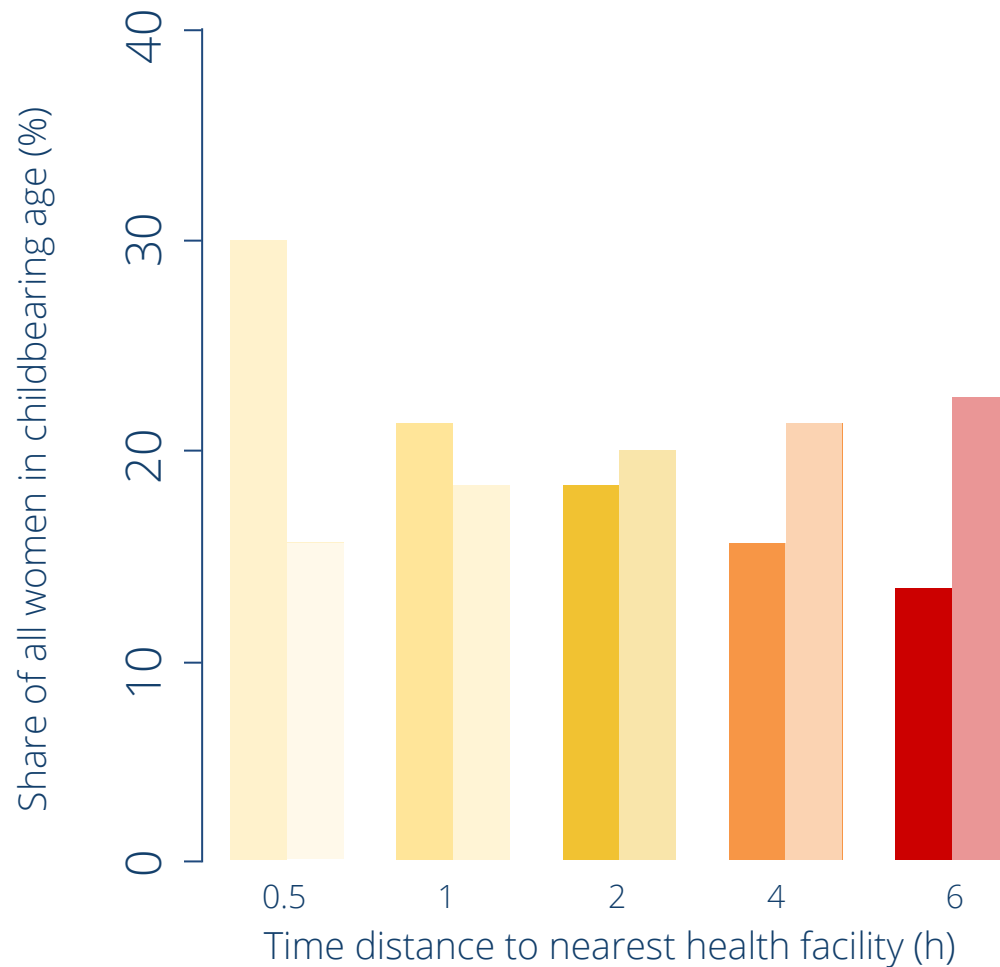
Availability  
disruption

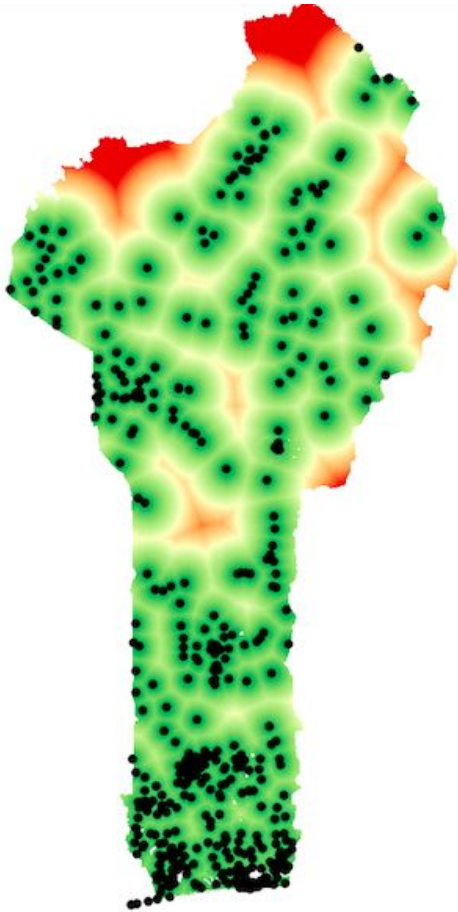


(i.e. stockouts)

# Time distance to nearest facility

- Theoretical
- Service availability interruption





Multi-criteria analysis

---

Where are  
investment  
priorities?

# Thank you

[Hive5 - Cours Saint Michel 30b,](#)  
[1040 Brussels, Belgium](#) • +32 2 319 47 99

[Bldv Patrice Lumumba 670A,](#)  
[2430 Bujumbura, Burundi](#) • +257 71 154 573

