

CLIMATE JUSTICE AND HEALTH EQUITY

THE ONGOING CHALLENGE FOR THE PLANETARY HEALTH WORKING GROUP OF THE BE-CAUSE HEALTH NETWORK

The 2021 Be-cause health conference, 'Climate Justice and Health Equity', looked into the interlinkages between climate change and disease trends and underlying causes, with a focus on public health impacts in LMICs, and explored possibilities to mitigate and adapt to the pending emergency.

During the conference, global health organisations and health workers discussed how to address the climate emergency in their health activities and programmes. Moreover, participants learned and exchanged information on how transformation could be enabled given that an urgent shift to a circular and socially just economic system, that respects the planetary boundaries, is required.

JOIN US :

• <https://www.be-causehealth.be/en/>

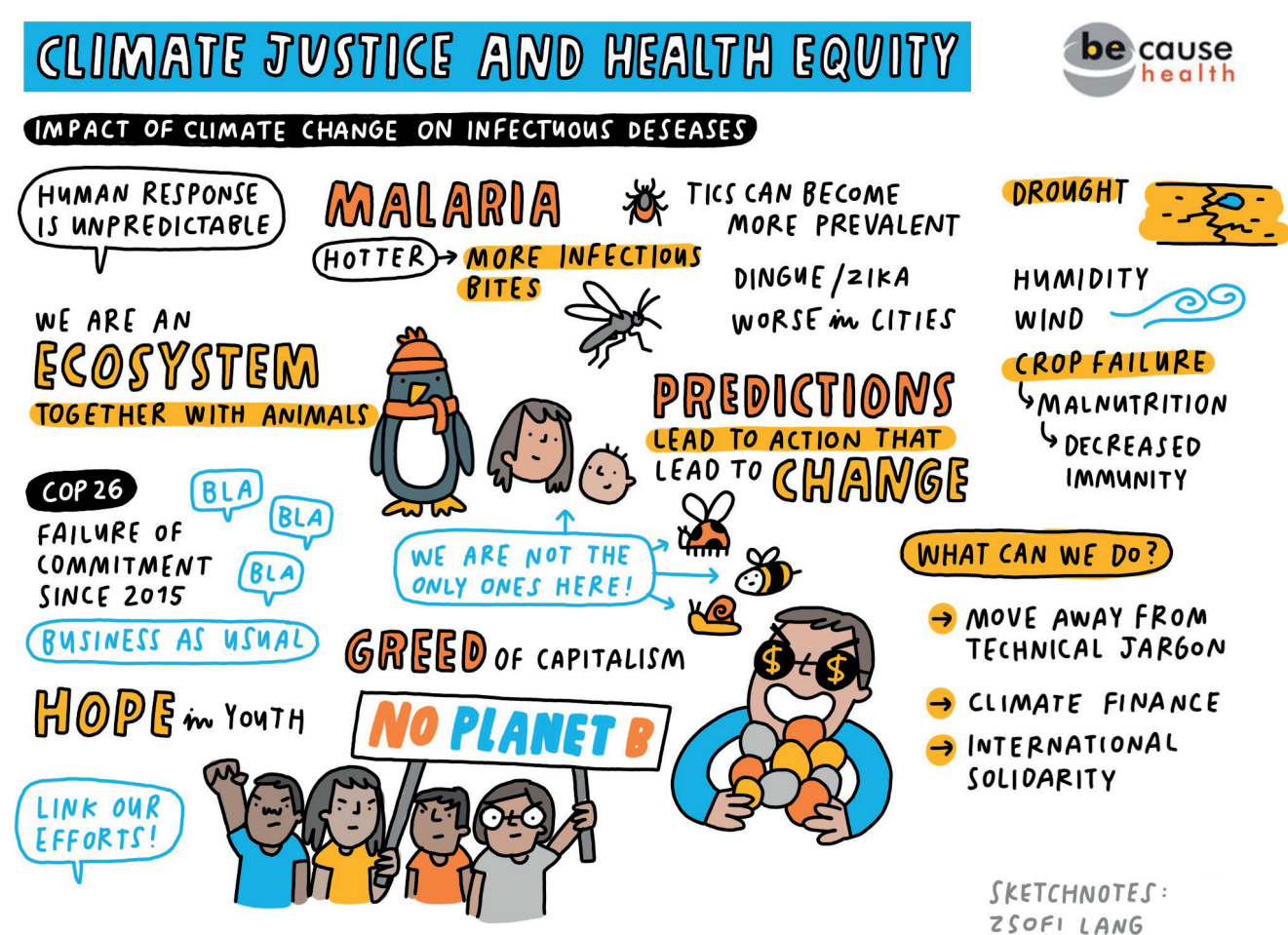
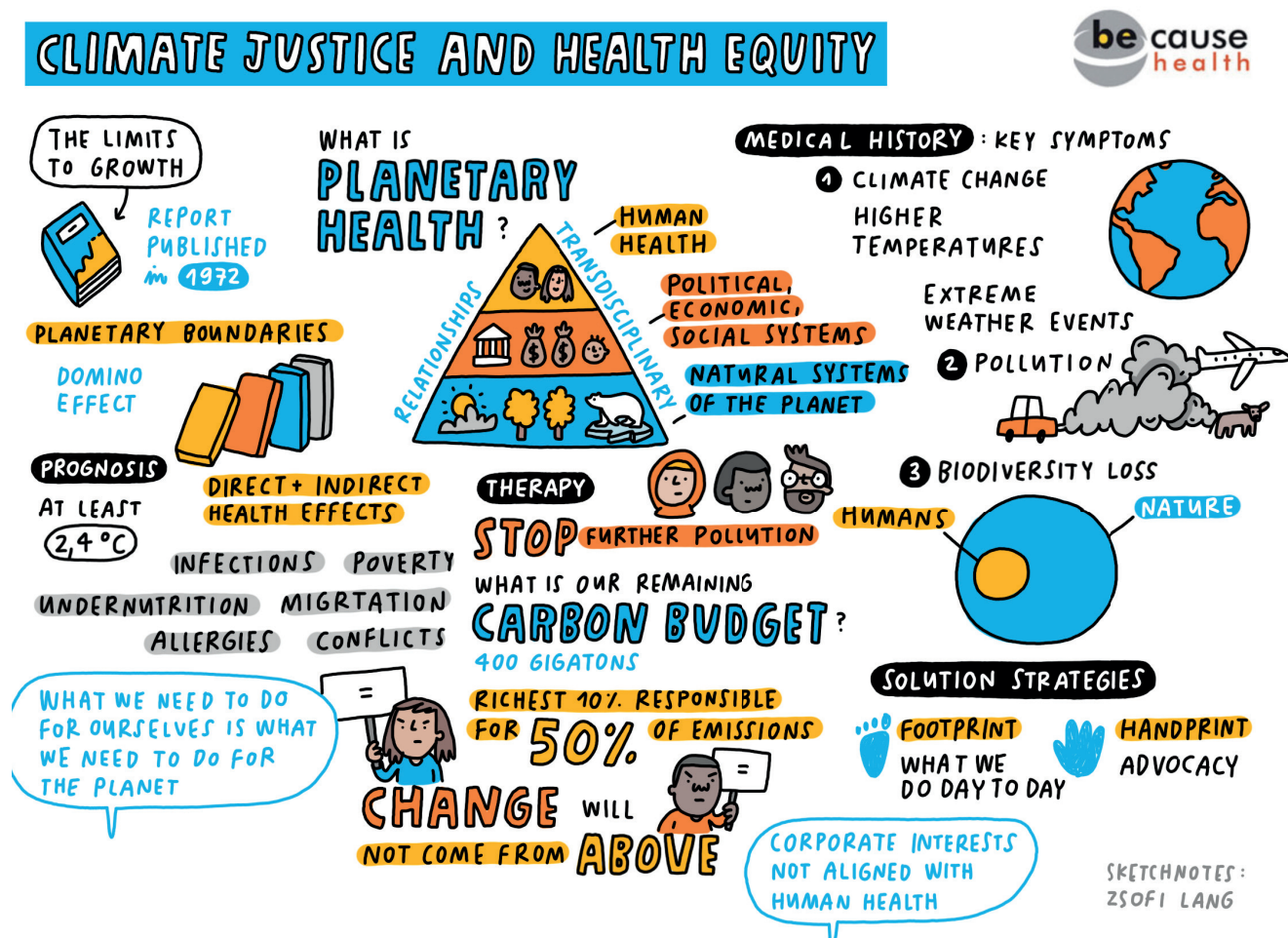
• becausehealth@itg.be

• Magalie Schotte - Be-cause health coordinator - mschotte@itg.be

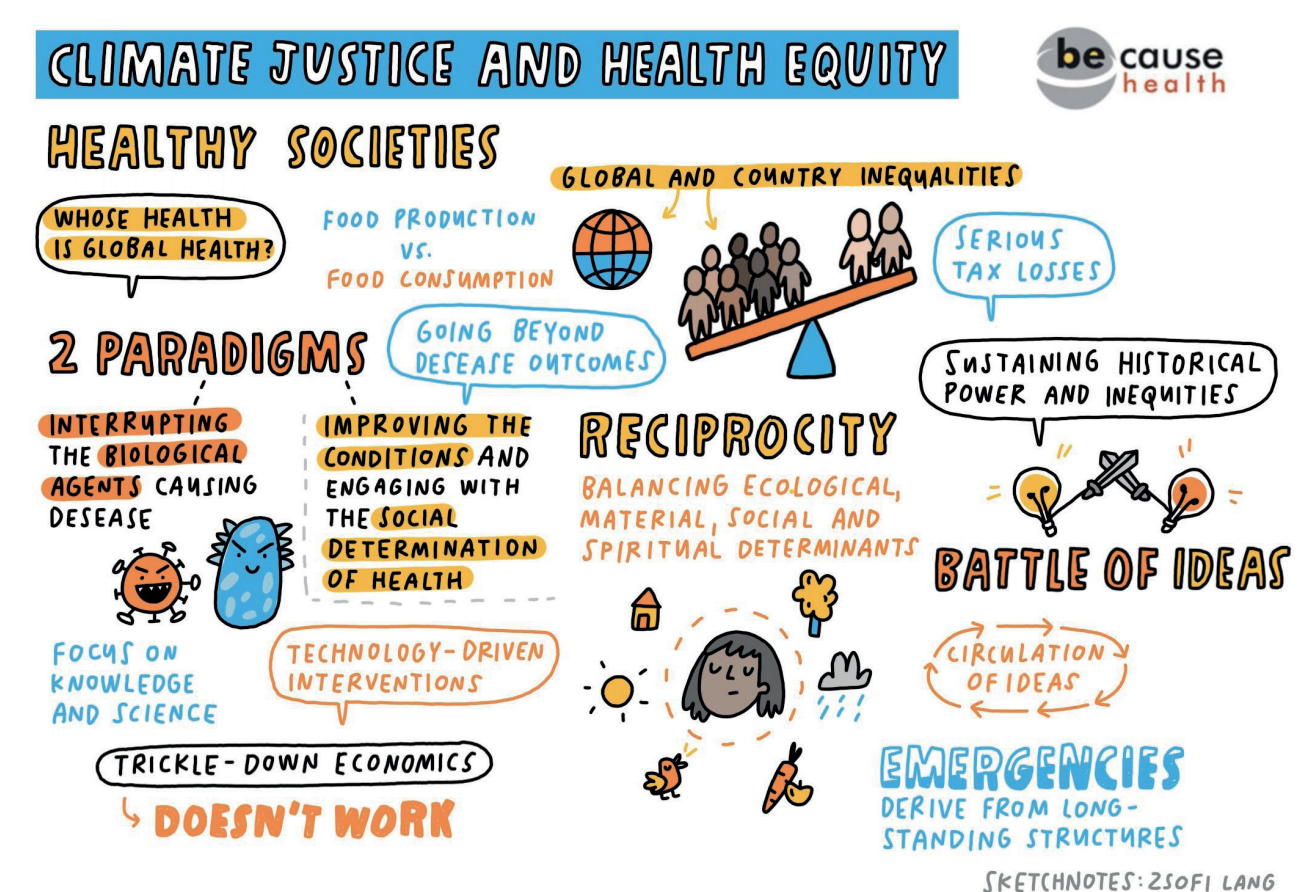
• Davide Ziveri - Planetary Health working group co-chair - d.ziveri@hi.org



WHAT IS ABOUT ?



WHAT CAN BE DONE ?



INSIGHTS:

- Alone we go fast, together we go further. However this doesn't come naturally.
- The climate and health crisis needs a multifactorial and intersectional approach. We have to look at the whole system, the linkages and collaborate.
- We can leave no one behind. 50% of the world's poorest population is only responsible for 10% of carbon emissions.
- At macro level, the differences between the North and the South of the planet, between the neoliberal policies and the need to de-grow, between the roles of the authorities and the communities were very much apparent.
- One Health brought animals into the picture. And wider concepts such as environmental health placed us as one of the organisms in between the rest of life. Local gardening even became a metaphor for care for the whole planet.
- Balancing short term reactions to emergencies with the longer-term strategies needed to face the challenges of climate change are a major point of attention.

“

“This is the tricky idea that came out of the conference today: how do we balance needs for development in the developing world with the need for maintaining good planetary health?”

-Tonga Calvin

“The faith of the planet (...) lays with the collective and purposeful will of the people who shall not wait for another catastrophe.”

-Beverly Longid

WHAT NEXT ?

We acknowledge an urgent need for developing a common language, shared vision, and experimenting and scaling concrete solutions among academia, health stakeholders, policy decision-makers, humanitarian and development NGOs, as well as individual engaged citizens without discrimination.

In line with the Be-cause health principles of social protection and equitable access to good quality responsive health services for all, and strong, resilient and sustainable health systems, this WG aims to create a space for technical exchange and to facilitate joint initiatives.

Be-cause health is a pluralistic open platform that connects Belgian development actors engaged in global health, facilitates exchanges of latest research and field experiences, and provides policy advice on international health cooperation.